

ORDINANCE NO. 2019 - 32

AN ORDINANCE OF THE BOARD OF COUNTY COMMISSIONERS OF COLLIER COUNTY, FLORIDA, AMENDING ORDINANCE 2019-15, THE FIDDLER'S CREEK COMMUNITY DEVELOPMENT DISTRICT #2, TO CORRECT A SCRIVENER'S ERROR RELATED TO EXHIBITS A AND B; PROVIDING FOR CONFLICT AND SEVERABILITY; PROVIDING FOR INCLUSION IN THE CODE OF LAWS AND ORDINANCES; AND PROVIDING AN EFFECTIVE DATE.

WHEREAS, on June 25, 2019, the Board of County Commissioners approved Ordinance Number 2019-15, the Fiddler's Creek Community Development District #2;

WHEREAS, following the Board's adoption of Ordinance Number 2019-15, it was determined that Exhibits A and B establishing the boundaries of the Fiddler's Creek Community Development District #2 were incorrectly attached.

WHEREAS, the inclusion of the incorrect Exhibits A and B now constitutes a scrivener's error.

SECTION ONE: SCRIVENER'S ERROR AMENDMENT TO EXHIBITS A AND B OF ORDINANCE 2019-15.

Exhibits A and B establishing the boundaries of Fiddler's Creek Community Development District #2 are hereby amended as set forth in attachments A and B to this Ordinance.

SECTION TWO: CONFLICT AND SEVERABILITY.

In the event this Ordinance conflicts with any other Ordinance of Collier County or any other applicable law, the more restrictive shall apply. If any phrase or portion of this Ordinance is held invalid or unconstitutional by any court of competent jurisdiction, such portion shall be deemed a separate, distinct and independent provision and such holding shall not affect the validity of the remaining portions.

SECTION THREE: INCLUSION IN THE CODE OF LAWS AND ORDINANCES.

The provisions of this Ordinance shall be made a part of the Code of Laws and Ordinances of Collier County, Florida. The sections of the Ordinances may be re-numbered or re-lettered to accomplish such, and the word "ordinance" may be changed to "section," "article," or any other appropriate word.

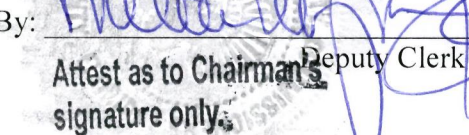
SECTION FOUR: EFFECTIVE DATE.

This Ordinance shall become effective upon filing with the Florida Department of State.

PASSED AND DULY ADOPTED by the Board of County Commissioners of Collier County, Florida, this 8th day of October, 2019.


ATTEST:
CRYSTAL K. KINZEL, CLERK

BOARD OF COUNTY COMMISSIONERS
COLLIER COUNTY, FLORIDA

By: 
Attest as to Chairman's
signature only.

By: 
William L. McDaniel, Jr., Chairman

Approved as to form and legality:


Jeffrey A. Klatzkow, County Attorney

Attachments: Amended Exhibits A and B

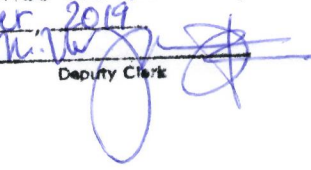
This ordinance filed with the
Secretary of State's Office the
10th day of October, 2019
and acknowledgement of that
filing received this 14th day
of October, 2019
By: 
Deputy Clerk

Exhibit "A"

\\hm-dots\HARDWARE-SV2\2200\S-Survey\Projects By Home Of Location\FLOODERS\1998070X CDD1 CDD2 REVISIONS\SKETCHES\CDD2 Revision 04\CDD2 SKD_Rev02.dwg 9/7/2016 3:44:01 PM Plotted by: Rick Kornett

LEGAL DESCRIPTION:

A PARCEL OF LAND LOCATED IN SECTIONS 11, 13 AND 14, TOWNSHIP 51 SOUTH, RANGE 26 EAST, AND SECTION 18, TOWNSHIP 51 SOUTH, RANGE 27 EAST, COLLIER COUNTY, FLORIDA AND BEING MORE PARTICULARLY DESCRIBED AS FOLLOWS:

BEGIN AT THE NORTHWEST CORNER OF SECTION 13, TOWNSHIP 51 SOUTH, RANGE 26 EAST, COLLIER COUNTY, FLORIDA; THENCE ALONG THE NORTH LINE OF SAID SECTION 13, RUN S89°55'46"E FOR A DISTANCE OF 4688.27 FEET, TO A POINT ON THE SOUTHERLY RIGHT-OF-WAY LINE OF U.S. 41 (TAMiami TRAIL), A 200' WIDE RIGHT-OF-WAY; THENCE ALONG SAID SOUTHERLY RIGHT-OF-WAY LINE, RUN S54°21'29"E FOR A DISTANCE OF 3793.58 FEET; THENCE LEAVING SAID SOUTHERLY RIGHT-OF-WAY LINE, RUN S35°39'17"W FOR A DISTANCE OF 107.40 FEET, TO A POINT OF NON-TANGENTIAL CIRCULAR CURVATURE; THENCE ALONG A CURVE TO THE RIGHT, HAVING A RADIUS OF 350.00 FEET, THROUGH A CENTRAL ANGLE OF 66°22'03", AND BEING SUBTENDED BY A CHORD OF 383.13 FEET, AT A BEARING OF S12°43'35"E, FOR AN ARC LENGTH OF 405.42 FEET, TO A POINT OF TANGENTIAL REVERSE CURVATURE; THENCE ALONG A CURVE TO THE LEFT, HAVING A RADIUS OF 150.00 FEET, THROUGH A CENTRAL ANGLE OF 110°27'50", AND BEING SUBTENDED BY A CHORD OF 246.44 FEET, AT A BEARING OF S34°46'28"E, FOR AN ARC LENGTH OF 289.19 FEET; THENCE RUN N89°59'37"E FOR A DISTANCE OF 58.44 FEET, TO A POINT OF TANGENTIAL CIRCULAR CURVATURE; THENCE ALONG A CURVE TO THE LEFT, HAVING A RADIUS OF 20.00 FEET, THROUGH A CENTRAL ANGLE OF 52°30'17", AND BEING SUBTENDED BY A CHORD OF 17.69 FEET, AT A BEARING OF N63°44'28"E, FOR AN ARC LENGTH OF 18.33 FEET, TO A POINT OF TANGENTIAL REVERSE CURVATURE; THENCE ALONG A CURVE TO THE RIGHT, HAVING A RADIUS OF 95.00 FEET, THROUGH A CENTRAL ANGLE OF 15°00'34", AND BEING SUBTENDED BY A CHORD OF 24.82 FEET, AT A BEARING OF N44°59'37"E, FOR AN ARC LENGTH OF 24.89 FEET, TO A POINT OF TANGENTIAL REVERSE CURVATURE; THENCE ALONG A CURVE TO THE LEFT, HAVING A RADIUS OF 20.00 FEET, THROUGH A CENTRAL ANGLE OF 52°30'17", AND BEING SUBTENDED BY A CHORD OF 17.69 FEET, AT A BEARING OF N26°14'45"E, FOR AN ARC LENGTH OF 18.33 FEET; THENCE RUN N89°59'37"E FOR A DISTANCE OF 100.00 FEET, TO A POINT OF NON-TANGENTIAL CIRCULAR CURVATURE; THENCE ALONG A CURVE TO THE LEFT, HAVING A RADIUS OF 20.00 FEET, THROUGH A CENTRAL ANGLE OF 52°30'17", AND BEING SUBTENDED BY A CHORD OF 17.69 FEET, AT A BEARING OF S26°15'32"E, FOR AN ARC LENGTH OF 18.33 FEET, TO A POINT OF TANGENTIAL REVERSE CURVATURE; THENCE ALONG A CURVE TO THE RIGHT, HAVING A RADIUS OF 95.00 FEET, THROUGH A CENTRAL ANGLE OF 15°00'34", AND BEING SUBTENDED BY A CHORD OF 24.82 FEET, AT A BEARING OF S45°00'23"E, FOR AN ARC LENGTH OF 24.89 FEET, TO A POINT OF TANGENTIAL REVERSE CURVATURE; THENCE ALONG A CURVE TO THE LEFT, HAVING A RADIUS OF 20.00 FEET, THROUGH A CENTRAL ANGLE OF 52°30'11", AND BEING SUBTENDED BY A CHORD OF 17.69 FEET, AT A BEARING OF S63°45'11"E, FOR AN ARC LENGTH OF 18.33 FEET; THENCE RUN S00°00'23"E FOR A DISTANCE OF 130.00 FEET; THENCE RUN N89°59'37"E FOR A DISTANCE OF 113.79 FEET; THENCE RUN S00°00'23"E FOR A DISTANCE OF 150.36 FEET, TO A POINT OF TANGENTIAL CIRCULAR CURVATURE; THENCE ALONG A CURVE TO THE RIGHT, HAVING A RADIUS OF 320.00 FEET, THROUGH A CENTRAL ANGLE OF 29°39'13", AND BEING SUBTENDED BY A CHORD OF 163.77 FEET, AT A BEARING OF S14°49'13"W, FOR AN ARC LENGTH OF 165.62 FEET, TO A POINT OF TANGENTIAL COMPOUND CURVATURE; THENCE ALONG A CURVE TO THE RIGHT, HAVING A RADIUS OF 1190.00 FEET, THROUGH A CENTRAL ANGLE OF 18°36'36", AND BEING SUBTENDED BY A CHORD OF 384.82 FEET, AT A BEARING OF S38°57'08"W, FOR AN ARC LENGTH OF 386.52 FEET, TO A POINT OF NON-TANGENTIAL COMPOUND CURVATURE; THENCE ALONG A CURVE TO THE RIGHT, HAVING A RADIUS OF 45.00 FEET, THROUGH A CENTRAL ANGLE OF 59°39'38", AND BEING SUBTENDED BY A CHORD OF 44.77 FEET, AT A BEARING OF S44°45'59"E, FOR AN ARC LENGTH OF 46.86 FEET, TO A POINT OF REVERSE CURVATURE; THENCE ALONG A CURVE TO THE LEFT, HAVING A RADIUS OF 62.58 FEET, THROUGH A CENTRAL ANGLE OF 18°38'25", AND BEING SUBTENDED BY A CHORD OF 20.27 FEET, AT A BEARING OF S24°15'23"E, FOR AN ARC LENGTH OF 20.36 FEET, TO A POINT OF REVERSE CURVATURE; THENCE ALONG A CURVE TO THE RIGHT, HAVING A RADIUS OF 45.00 FEET, THROUGH A CENTRAL ANGLE OF 61°46'37", AND BEING SUBTENDED BY A CHORD OF 46.20 FEET, AT A BEARING OF S02°41'17"E, FOR AN ARC LENGTH OF 48.52 FEET; THENCE RUN S28°12'02"W FOR A DISTANCE OF 70.46 FEET, TO A POINT OF TANGENTIAL CIRCULAR CURVATURE; THENCE ALONG A CURVE TO THE LEFT, HAVING A RADIUS OF 300.00 FEET, THROUGH A CENTRAL ANGLE OF 26°33'16", AND BEING SUBTENDED BY A CHORD OF 137.80 FEET, AT A BEARING OF S14°55'24"W, FOR AN ARC LENGTH OF 139.04 FEET, TO A POINT OF TANGENTIAL REVERSE CURVATURE; THENCE ALONG A CURVE TO THE RIGHT, HAVING A RADIUS OF 300.00 FEET, THROUGH A CENTRAL ANGLE OF 74°19'47", AND BEING SUBTENDED BY A CHORD OF 362.47 FEET, AT A BEARING OF S38°48'40"W, FOR AN ARC LENGTH OF 389.19 FEET, TO A POINT OF TANGENTIAL REVERSE CURVATURE; THENCE ALONG A CURVE TO THE LEFT, HAVING A RADIUS OF 300.00 FEET, THROUGH A CENTRAL ANGLE OF 85°58'55", AND BEING SUBTENDED BY A CHORD OF 409.13 FEET, AT A BEARING OF S32°59'06"W, FOR AN ARC LENGTH OF 450.20 FEET, TO A POINT OF TANGENTIAL REVERSE CURVATURE; THENCE ALONG A CURVE TO THE RIGHT, HAVING A RADIUS OF 45.00 FEET, THROUGH A CENTRAL ANGLE OF 111°49'56", AND BEING SUBTENDED BY A CHORD OF 74.54 FEET, AT A BEARING OF S45°54'37"W, FOR AN ARC LENGTH OF 87.83 FEET; THENCE RUN N78°10'25"W FOR A DISTANCE OF 194.68 FEET, TO A POINT OF TANGENTIAL CIRCULAR CURVATURE; THENCE ALONG A CURVE TO THE RIGHT, HAVING A RADIUS OF 45.00 FEET, THROUGH A CENTRAL ANGLE OF 116°41'28", AND BEING SUBTENDED BY A CHORD OF 76.61 FEET, AT A BEARING OF N19°49'41"W, FOR AN ARC LENGTH OF 91.65 FEET; THENCE RUN N38°31'03"E FOR A DISTANCE OF 111.08 FEET; THENCE RUN N51°28'57"W FOR A DISTANCE OF 105.27 FEET, TO A POINT OF NON-TANGENTIAL CIRCULAR CURVATURE; THENCE ALONG A CURVE TO THE RIGHT, HAVING A RADIUS OF 365.00 FEET, THROUGH A CENTRAL ANGLE OF 75°57'07", AND BEING SUBTENDED BY A CHORD OF 449.19 FEET, AT A BEARING OF S78°42'20"W, FOR AN ARC LENGTH OF 483.85 FEET, TO A POINT OF NON-TANGENTIAL COMPOUND CURVATURE; THENCE ALONG A CURVE TO THE RIGHT, HAVING A RADIUS OF 45.00 FEET, THROUGH A CENTRAL ANGLE OF 107°40'34", AND BEING SUBTENDED BY A CHORD OF 72.66 FEET, AT A BEARING OF S16°58'44"W, FOR AN ARC LENGTH OF 84.57 FEET, TO A POINT OF NON-TANGENTIAL COMPOUND CURVATURE; THENCE ALONG A CURVE TO THE LEFT, HAVING A RADIUS OF 260.00 FEET, THROUGH A CENTRAL ANGLE OF 74°43'05", AND BEING SUBTENDED BY A CHORD OF 315.54 FEET, AT A BEARING OF S33°46'55"W, FOR AN ARC LENGTH OF 339.06 FEET; THENCE RUN S03°34'37"E FOR A DISTANCE OF 87.88 FEET, TO A POINT OF TANGENTIAL CIRCULAR CURVATURE; THENCE ALONG A CURVE TO THE RIGHT, HAVING A RADIUS OF 225.00 FEET, THROUGH A CENTRAL ANGLE OF 94°37'47", AND BEING SUBTENDED BY A CHORD OF 330.79 FEET, AT A BEARING OF S43°44'16"W, FOR AN ARC LENGTH OF 371.61 FEET; THENCE RUN N88°56'50"W FOR A DISTANCE OF 322.37 FEET, TO A POINT OF TANGENTIAL CIRCULAR CURVATURE; THENCE ALONG A CURVE TO THE RIGHT, HAVING A RADIUS OF 285.00 FEET, THROUGH A CENTRAL ANGLE OF 18°35'10", AND BEING SUBTENDED BY A CHORD OF 92.05 FEET, AT A BEARING OF N79°39'15"W, FOR AN ARC LENGTH OF 92.45 FEET; THENCE RUN N88°56'39"W FOR A DISTANCE OF 664.33 FEET, TO A POINT OF TANGENTIAL CIRCULAR CURVATURE; THENCE ALONG A CURVE TO THE LEFT, HAVING A RADIUS OF 80.00 FEET, THROUGH A CENTRAL ANGLE OF 42°52'13", AND BEING SUBTENDED BY A CHORD OF 58.47 FEET, AT A BEARING OF S69°37'15"W, FOR AN ARC LENGTH OF 59.86 FEET, TO A POINT OF COMPOUND CURVATURE; THENCE ALONG A CURVE TO THE LEFT, HAVING A RADIUS OF 81.20 FEET, THROUGH A CENTRAL ANGLE OF 94°11'25", AND BEING SUBTENDED BY A CHORD OF 118.96 FEET, AT A BEARING OF N84°43'04"W, FOR AN ARC LENGTH OF 133.49 FEET;

DRAWN BY: R.A.K.
DATE: 8/7/16
SHEET 1 OF SHEET 5
SEC-TWN-RGE: 11,13,14-S1S-26E & 18-51S-27E



950 Encore Way
Naples, FL 34110
Phone: (239) 254-2000
Florida Certificate of
Authorization No.1772

LEGAL DESCRIPTION
COMMUNITY DEVELOPMENT DISTRICT 2

DRAWING NO. B-7366-2
PROJECT NO. 1998070
FILE NAME CDD2 SKD_Rev02.dwg



(CONTINUED FROM SHEET 1 OF 5)

THENCE RUN S04°47'07"W FOR A DISTANCE OF 126.86 FEET; THENCE RUN N77°46'12"W FOR A DISTANCE OF 78.84 FEET; THENCE RUN N88°51'53"W FOR A DISTANCE OF 65.94 FEET; THENCE RUN N84°45'39"W FOR A DISTANCE OF 685.72 FEET; THENCE RUN S05°42'49"W FOR A DISTANCE OF 66.04 FEET; THENCE RUN N84°17'11"W FOR A DISTANCE OF 48.52 FEET; THENCE RUN S28°00'46"W FOR A DISTANCE OF 219.00 FEET; THENCE RUN N61°59'14"W FOR A DISTANCE OF 667.71 FEET, TO A POINT OF TANGENTIAL CIRCULAR CURVATURE; THENCE ALONG A CURVE TO THE LEFT, HAVING A RADIUS OF 200.00 FEET, THROUGH A CENTRAL ANGLE OF 23°47'41", AND BEING SUBTENDED BY A CHORD OF 82.46 FEET, AT A BEARING OF N73°53'04"W, FOR AN ARC LENGTH OF 83.06 FEET, TO A POINT OF TANGENTIAL REVERSE CURVATURE; THENCE ALONG A CURVE TO THE RIGHT, HAVING A RADIUS OF 300.00 FEET, THROUGH A CENTRAL ANGLE OF 16°27'34", AND BEING SUBTENDED BY A CHORD OF 85.89 FEET, AT A BEARING OF N77°33'08"W, FOR AN ARC LENGTH OF 86.18 FEET, TO A POINT OF TANGENTIAL COMPOUND CURVATURE; THENCE ALONG A CURVE TO THE RIGHT, HAVING A RADIUS OF 150.00 FEET, THROUGH A CENTRAL ANGLE OF 61°29'33", AND BEING SUBTENDED BY A CHORD OF 153.37 FEET, AT A BEARING OF N38°34'34"W, FOR AN ARC LENGTH OF 160.99 FEET, TO A POINT OF TANGENTIAL REVERSE CURVATURE; THENCE ALONG A CURVE TO THE LEFT, HAVING A RADIUS OF 137.00 FEET, THROUGH A CENTRAL ANGLE OF 112°55'12", AND BEING SUBTENDED BY A CHORD OF 228.38 FEET, AT A BEARING OF N64°17'24"W, FOR AN ARC LENGTH OF 270.00 FEET; THENCE RUN S59°15'00"W FOR A DISTANCE OF 59.92 FEET, TO A POINT OF TANGENTIAL CIRCULAR CURVATURE; THENCE ALONG A CURVE TO THE RIGHT, HAVING A RADIUS OF 135.00 FEET, THROUGH A CENTRAL ANGLE OF 71°28'36", AND BEING SUBTENDED BY A CHORD OF 157.70 FEET, AT A BEARING OF N85°00'42"W, FOR AN ARC LENGTH OF 168.41 FEET, TO A POINT OF TANGENTIAL REVERSE CURVATURE; THENCE ALONG A CURVE TO THE LEFT, HAVING A RADIUS OF 250.00 FEET, THROUGH A CENTRAL ANGLE OF 38°03'09", AND BEING SUBTENDED BY A CHORD OF 163.00 FEET, AT A BEARING OF N68°17'59"W, FOR AN ARC LENGTH OF 166.04 FEET; THENCE RUN N87°19'33"W FOR A DISTANCE OF 86.72 FEET, TO A POINT OF TANGENTIAL CIRCULAR CURVATURE; THENCE ALONG A CURVE TO THE RIGHT, HAVING A RADIUS OF 10.00 FEET, THROUGH A CENTRAL ANGLE OF 80°16'50", AND BEING SUBTENDED BY A CHORD OF 12.89 FEET, AT A BEARING OF N47°11'08"W, FOR AN ARC LENGTH OF 14.01 FEET; THENCE RUN N07°02'43"W FOR A DISTANCE OF 40.73 FEET, TO A POINT OF TANGENTIAL CIRCULAR CURVATURE; THENCE ALONG A CURVE TO THE LEFT, HAVING A RADIUS OF 100.00 FEET, THROUGH A CENTRAL ANGLE OF 54°47'04", AND BEING SUBTENDED BY A CHORD OF 92.02 FEET, AT A BEARING OF N34°26'15"W, FOR AN ARC LENGTH OF 95.62 FEET, TO A POINT OF TANGENTIAL COMPOUND CURVATURE; THENCE ALONG A CURVE TO THE LEFT, HAVING A RADIUS OF 550.00 FEET, THROUGH A CENTRAL ANGLE OF 13°06'41", AND BEING SUBTENDED BY A CHORD OF 125.58 FEET, AT A BEARING OF N68°23'07"W, FOR AN ARC LENGTH OF 125.86 FEET, TO A POINT OF TANGENTIAL REVERSE CURVATURE; THENCE ALONG A CURVE TO THE RIGHT, HAVING A RADIUS OF 500.00 FEET, THROUGH A CENTRAL ANGLE OF 46°56'36", AND BEING SUBTENDED BY A CHORD OF 398.30 FEET, AT A BEARING OF N51°28'09"W, FOR AN ARC LENGTH OF 409.66 FEET; THENCE RUN N27°59'51"W FOR A DISTANCE OF 47.49 FEET, TO A POINT OF TANGENTIAL CIRCULAR CURVATURE; THENCE ALONG A CURVE TO THE LEFT, HAVING A RADIUS OF 260.00 FEET, THROUGH A CENTRAL ANGLE OF 60°36'37", AND BEING SUBTENDED BY A CHORD OF 262.39 FEET, AT A BEARING OF N58°18'09"W, FOR AN ARC LENGTH OF 275.04 FEET; THENCE RUN N88°36'28"W FOR A DISTANCE OF 125.93 FEET, TO A POINT OF TANGENTIAL CIRCULAR CURVATURE; THENCE ALONG A CURVE TO THE LEFT, HAVING A RADIUS OF 100.00 FEET, THROUGH A CENTRAL ANGLE OF 69°20'20", AND BEING SUBTENDED BY A CHORD OF 113.77 FEET, AT A BEARING OF S56°43'22"W, FOR AN ARC LENGTH OF 121.02 FEET, TO A POINT OF TANGENTIAL REVERSE CURVATURE; THENCE ALONG A CURVE TO THE RIGHT, HAVING A RADIUS OF 200.00 FEET, THROUGH A CENTRAL ANGLE OF 48°41'47", AND BEING SUBTENDED BY A CHORD OF 164.91 FEET, AT A BEARING OF S46°24'06"W, FOR AN ARC LENGTH OF 169.98 FEET, TO A POINT OF TANGENTIAL COMPOUND CURVATURE; THENCE ALONG A CURVE TO THE RIGHT, HAVING A RADIUS OF 700.00 FEET, THROUGH A CENTRAL ANGLE OF 13°28'58", AND BEING SUBTENDED BY A CHORD OF 164.34 FEET, AT A BEARING OF S77°29'29"W, FOR AN ARC LENGTH OF 164.72 FEET; THENCE RUN S84°13'58"W FOR A DISTANCE OF 169.90 FEET, TO A POINT OF TANGENTIAL CIRCULAR CURVATURE; THENCE ALONG A CURVE TO THE LEFT, HAVING A RADIUS OF 250.00 FEET, THROUGH A CENTRAL ANGLE OF 34°43'19", AND BEING SUBTENDED BY A CHORD OF 149.20 FEET, AT A BEARING OF S66°52'18"W, FOR AN ARC LENGTH OF 151.50 FEET, TO A POINT OF TANGENTIAL REVERSE CURVATURE; THENCE ALONG A CURVE TO THE RIGHT, HAVING A RADIUS OF 475.00 FEET, THROUGH A CENTRAL ANGLE OF 62°08'00", AND BEING SUBTENDED BY A CHORD OF 490.23 FEET, AT A BEARING OF S80°34'39"W, FOR AN ARC LENGTH OF 515.11 FEET, TO A POINT OF TANGENTIAL REVERSE CURVATURE; THENCE ALONG A CURVE TO THE LEFT, HAVING A RADIUS OF 200.00 FEET, THROUGH A CENTRAL ANGLE OF 65°24'33", AND BEING SUBTENDED BY A CHORD OF 216.12 FEET, AT A BEARING OF S78°56'22"W, FOR AN ARC LENGTH OF 228.32 FEET, TO A POINT OF TANGENTIAL REVERSE CURVATURE; THENCE ALONG A CURVE TO THE RIGHT, HAVING A RADIUS OF 150.00 FEET, THROUGH A CENTRAL ANGLE OF 43°19'39", AND BEING SUBTENDED BY A CHORD OF 110.75 FEET, AT A BEARING OF S67°53'55"W, FOR AN ARC LENGTH OF 113.43 FEET; THENCE RUN S89°33'44"W FOR A DISTANCE OF 33.81 FEET; THENCE RUN N00°25'58"W FOR A DISTANCE OF 2674.12 FEET; THENCE RUN N26°57'22"W FOR A DISTANCE OF 100.00 FEET, TO A POINT OF NON-TANGENTIAL CIRCULAR CURVATURE; THENCE ALONG A CURVE TO THE RIGHT, HAVING A RADIUS OF 709.89 FEET, THROUGH A CENTRAL ANGLE OF 15°24'01", AND BEING SUBTENDED BY A CHORD OF 190.23 FEET, AT A BEARING OF S70°44'39"W, FOR AN ARC LENGTH OF 190.81 FEET, TO A POINT ON THE EAST LINE OF THE NORTHEAST QUARTER OF SECTION 14, TOWNSHIP 51 SOUTH, RANGE 26 EAST; THENCE ALONG SAID EAST LINE OF THE NORTHEAST QUARTER OF SECTION 14, RUN N00°25'37"W FOR A DISTANCE OF 495.65 FEET, TO THE SOUTHEAST CORNER OF THE NORTHEAST QUARTER OF THE NORTHEAST QUARTER OF SAID SECTION 14; THENCE ALONG THE SOUTH LINE OF THE NORTHEAST QUARTER OF THE NORTHEAST QUARTER OF SAID SECTION 14, RUN N88°20'43"W FOR A DISTANCE OF 693.91 FEET, TO THE SOUTHWEST CORNER OF THE EAST HALF OF THE NORTHEAST QUARTER OF THE NORTHEAST QUARTER OF SAID SECTION 14; THENCE LEAVING SAID SECTION LINE, RUN N52°51'27"W FOR A DISTANCE OF 171.83 FEET; THENCE RUN S37°08'33"W FOR A DISTANCE OF 122.51 FEET, TO A POINT ON THE SOUTH LINE OF THE NORTH QUARTER OF SAID SECTION 14; THENCE ALONG SAID SOUTH LINE OF THE NORTH QUARTER OF SAID SECTION 14, RUN N88°20'43"W FOR A DISTANCE OF 2557.48 FEET; THENCE ALONG THE WEST LINE OF THE EAST HALF OF THE NORTHEAST QUARTER OF THE NORTHWEST QUARTER OF SAID SECTION 14, RUN N00°02'07"E FOR A DISTANCE OF 1389.87 FEET; THENCE LEAVING SAID QUARTER LINE, RUN N88°05'43"W FOR A DISTANCE OF 590.35 FEET; THENCE RUN N01°43'02"E FOR A DISTANCE OF 1493.79 FEET; THENCE RUN S88°09'55"E FOR A DISTANCE OF 1274.00 FEET; THENCE RUN S88°09'46"E FOR A DISTANCE OF 1374.52 FEET; THENCE ALONG THE WEST LINE OF THE EAST HALF OF THE SOUTHEAST QUARTER OF SECTION 11 AND THE WEST LINE OF THE SOUTHEAST QUARTER OF THE NORTHEAST QUARTER OF SAID SECTION 11, TOWNSHIP 51 SOUTH, RANGE 26 EAST, RUN N01°13'54"E FOR A DISTANCE OF 1860.10 FEET; THENCE LEAVING SAID QUARTER LINE, RUN S88°46'12"E FOR A DISTANCE OF 518.33 FEET, TO A POINT OF NON-TANGENTIAL CIRCULAR CURVATURE; THENCE ALONG A CURVE TO THE RIGHT, HAVING A RADIUS OF 350.00 FEET, THROUGH A CENTRAL ANGLE OF 37°05'11", AND BEING SUBTENDED BY A CHORD OF 222.61 FEET, AT A BEARING OF N17°05'16"E, FOR AN ARC LENGTH OF 226.55 FEET; THENCE RUN N35°37'51"E FOR A DISTANCE OF 214.87 FEET, TO A POINT ON SAID SOUTHERLY RIGHT-OF-WAY LINE OF U.S. 41;

DRAWN BY: R.A.K.
SHEET 2
DATE: 9/7/18
OF SHEET 5
SEC-TWN-RGE: 11,13,14-51S-26E & 18-51S-27E



950 Encore Way
Naples, FL. 34110
Phone: (239) 254-2000
Florida Certificate of
Authorization No.1772

LEGAL DESCRIPTION
COMMUNITY DEVELOPMENT DISTRICT 2

DRAWING NO. B-7366-2
PROJECT NO. 1998070
FILE NAME CDD2 SKD_Rv02.dwg



(CONTINUED FROM SHEET 2 OF 5)

THENCE ALONG SAID SOUTHERLY RIGHT-OF-WAY LINE, RUN S54°21'53"E FOR A DISTANCE OF 807.97 FEET, TO AN INTERSECTION WITH THE EAST LINE OF THE NORTHEAST QUARTER OF SAID SECTION 11; THENCE ALONG SAID QUARTER LINE, RUN S01°00'06"W FOR A DISTANCE OF 3308.61 FEET, TO THE POINT OF BEGINNING OF THE PARCEL HEREIN DESCRIBED; CONTAINING 1,070.640 ACRES.

LESS AND EXCEPT:

A PARCEL OF LAND LOCATED IN A PORTION OF SECTION 14, TOWNSHIP 51 SOUTH, RANGE 26 EAST, COLLIER COUNTY, FLORIDA, BEING MORE PARTICULARLY DESCRIBED AS FOLLOWS:

THE NORTHEAST 1/4 OF THE NORTHEAST 1/4 OF THE NORTHEAST 1/4 OF SECTION 14, TOWNSHIP 51 SOUTH, RANGE 26 EAST, COLLIER COUNTY, FLORIDA, CONTAINING 10.906 ACRES, MORE OR LESS.

TOTAL DESCRIBED AREA = 1,059.734 ACRES.

HOLE MONTES, INC.
CERTIFICATE OF AUTHORIZATION NUMBER LB 1772

BY

JOHN J. HILTON

P.S.M. #6278
STATE OF FLORIDA

DRAWN BY: R.A.K.	DATE: 9/7/16
SHEET 3	OF SHEET 5
SEC-TWN-RGE: 11,13,14--51S-26E & 18-51S-27E	

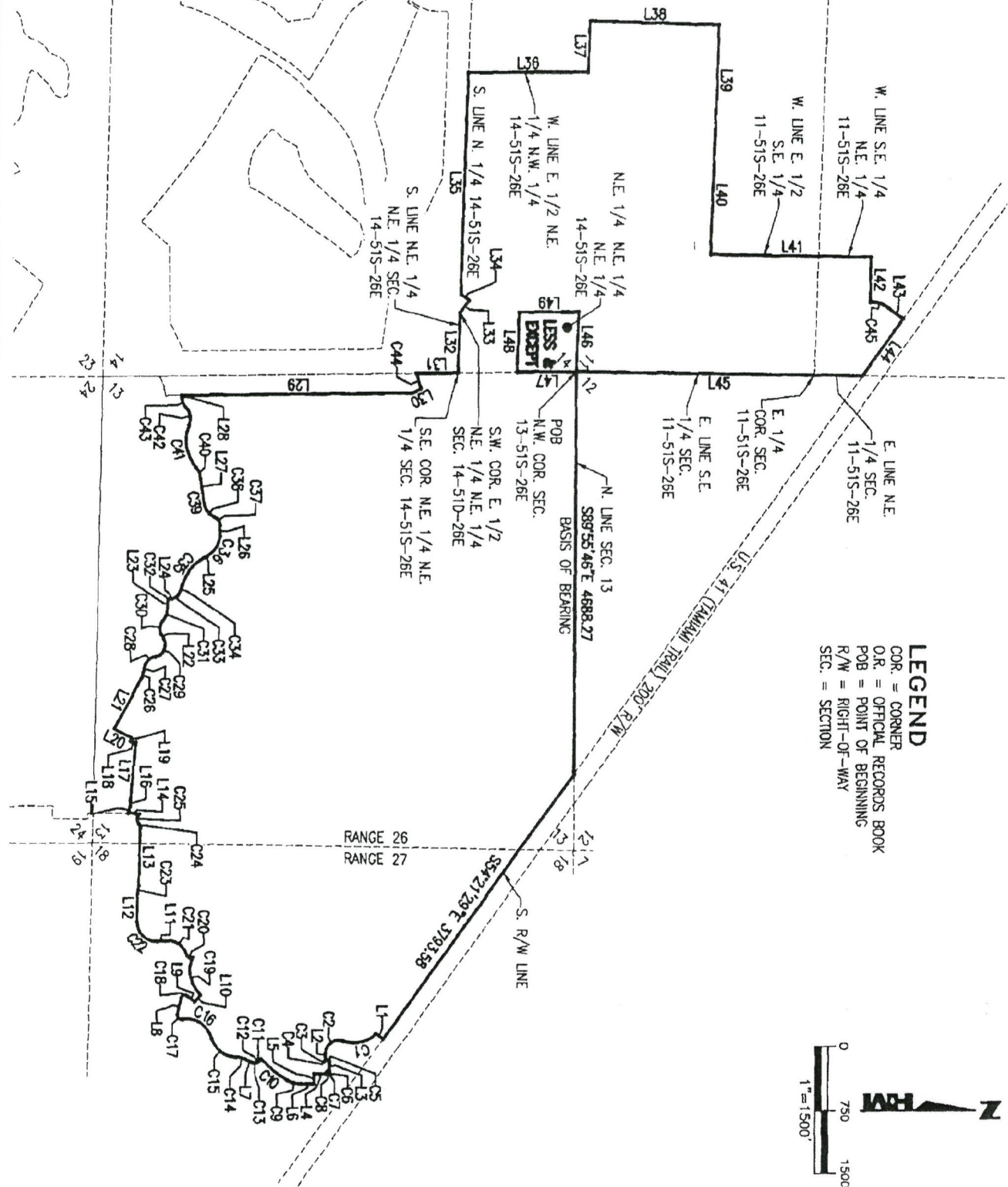


950 Encore Way
Naples, FL. 34110
Phone: (239) 254-2000
Florida Certificate of
Authorization No.1772

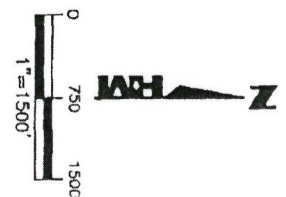
LEGAL DESCRIPTION
COMMUNITY DEVELOPMENT DISTRICT 2

DRAWING NO. B-7366-2
PROJECT NO. 1998070
FILE NAME CDD2 SKD_Rev02.dwg





LEGEND
 COR. = CORNER
 O.R. = OFFICIAL RECORDS BOOK
 POB = POINT OF BEGINNING
 R/W = RIGHT-OF-WAY
 SEC. = SECTION



DRAWN BY:
R.A.K.
SHEET
4
DATE:
9/7/16
OF SHEET
5
SEC-TWN-RGE:
11,13,14-51S-26E & 18-51S-27E



950 Encore Way
 Naples, FL. 34110
 Phone: (239) 254-2000
 Florida Certificate of
 Authorization No.1772

SKETCH OF LEGAL DESCRIPTION
 COMMUNITY DEVELOPMENT DISTRICT 2

DRAWING NO.
B-7366-2
PROJECT NO.
1998070
FILE NAME
C002 SKD_Rer02.dwg

CURVE TABLE					
CURVE	RADIUS	DELTA	CHORD	CHORD BEARING	ARC LENGTH
C1	350.00	66°22'03"	383.13	S12°43'35"E	405.42
C2	150.00	110°27'50"	246.44	S34°46'28"E	289.19
C3	20.00	52°30'17"	17.69	N63°44'28"E	18.33
C4	95.00	15°00'34"	24.82	N44°59'37"E	24.89
C5	20.00	52°30'17"	17.69	N26°14'45"E	18.33
C6	20.00	52°30'17"	17.69	S26°15'32"E	18.33
C7	95.00	15°00'34"	24.82	S45°00'23"E	24.89
C8	20.00	52°30'11"	17.69	S63°45'11"E	18.33
C9	320.00	29°39'13"	163.77	S14°49'13"W	165.82
C10	1190.00	18°38'36"	384.82	S38°57'08"W	386.52
C11	45.00	59°39'38"	44.77	S44°45'59"E	46.86
C12	62.58	18°38'25"	20.27	S24°15'23"E	20.36
C13	45.00	61°46'37"	46.20	S02°41'17"E	48.52
C14	300.00	26°33'16"	137.80	S14°55'24"W	139.04
C15	300.00	74°19'47"	362.47	S38°48'40"W	389.19
C16	300.00	85°58'55"	409.13	S32°59'06"W	450.20
C17	45.00	111°49'56"	74.54	S45°54'37"W	87.83
C18	45.00	116°41'28"	76.61	N19°49'41"W	91.65
C19	365.00	75°57'07"	449.19	S78°42'20"W	483.85
C20	45.00	107°40'34"	72.66	S16°58'44"W	84.57
C21	260.00	74°43'05"	315.54	S33°48'55"W	339.06
C22	225.00	94°37'47"	330.79	S43°44'16"W	371.61
C23	285.00	18°35'10"	92.05	N79°39'15"W	92.45

CURVE TABLE					
CURVE	RADIUS	DELTA	CHORD	CHORD BEARING	ARC LENGTH
C24	80.00	42°52'13"	58.47	S69°37'15"W	59.86
C25	81.20	94°11'26"	118.96	N84°43'04"W	133.49
C26	200.00	23°47'41"	82.46	N73°53'04"W	83.06
C27	300.00	16°27'34"	85.89	N77°33'08"W	86.18
C28	150.00	61°29'33"	153.37	N38°34'34"W	160.99
C29	137.00	112°55'12"	228.38	N64°17'24"W	270.00
C30	135.00	71°28'36"	157.70	N85°00'42"W	168.41
C31	250.00	38°03'09"	163.00	N68°17'59"W	166.04
C32	10.00	80°16'50"	12.89	N47°11'08"W	14.01
C33	100.00	54°47'04"	92.02	N34°26'15"W	95.62
C34	550.00	13°06'41"	125.58	N68°23'07"W	125.86
C35	500.00	46°56'36"	398.30	N51°28'09"W	409.66
C36	260.00	60°36'37"	262.39	N58°18'09"W	275.04
C37	100.00	69°20'20"	113.77	S56°43'22"W	121.02
C38	200.00	48°41'47"	164.91	S46°24'06"W	169.98
C39	700.00	13°28'56"	184.34	S77°29'29"W	184.72
C40	250.00	34°43'19"	149.20	S66°52'18"W	151.50
C41	475.00	62°08'00"	490.23	S80°34'39"W	515.11
C42	200.00	65°24'33"	216.12	S78°56'22"W	228.32
C43	150.00	43°19'39"	110.75	S67°53'55"W	113.43
C44	709.89	15°24'01"	190.23	S70°44'39"W	190.81
C45	350.00	37°05'11"	222.81	N17°05'16"E	226.55

LINE TABLE		
LINE	DIRECTION	LENGTH
L1	S35°39'17"W	107.40
L2	N89°59'37"E	58.44
L3	N89°59'37"E	100.00
L4	S00°00'23"E	130.00
L5	N89°59'37"E	113.79
L6	S00°00'23"E	150.36
L7	S28°12'02"W	70.46
L8	N78°10'25"W	194.68
L9	N38°31'03"E	111.08
L10	N51°28'57"W	105.27
L11	S03°34'37"E	87.88
L12	N88°56'50"W	322.37
L13	N88°56'39"W	664.33

LINE TABLE		
LINE	DIRECTION	LENGTH
L14	S04°47'07"W	126.86
L15	N77°46'12"W	78.84
L16	N88°51'53"W	85.94
L17	N84°45'39"W	685.72
L18	S05°42'49"W	66.04
L19	N84°17'11"W	48.52
L20	S28°00'46"W	219.00
L21	N61°59'14"W	667.71
L22	S59°15'00"W	59.92
L23	N87°19'33"W	86.72
L24	N07°02'43"W	40.73
L25	N27°59'51"W	47.49
L26	N88°36'28"W	125.93

LINE TABLE		
LINE	DIRECTION	LENGTH
L27	S84°13'58"W	169.90
L28	S89°33'44"W	33.81
L29	N00°25'58"W	2674.12
L30	N26°57'22"W	100.00
L31	N00°25'37"W	495.65
L32	N88°20'43"W	693.91
L33	N52°51'27"W	171.83
L34	S37°08'33"W	122.51
L35	N88°20'43"W	2557.48
L36	N00°02'07"E	1389.87
L37	N88°05'43"W	590.35
L38	N01°43'02"E	1493.79
L39	S88°09'55"E	1274.00

LINE TABLE		
LINE	DIRECTION	LENGTH
L40	S88°09'46"E	1374.62
L41	N01°13'54"E	1860.10
L42	S88°46'12"E	518.33
L43	N35°37'51"E	214.87
L44	S54°21'53"E	807.97
L45	S01°00'06"W	3308.61
L46	S88°05'23"E	690.28
L47	S00°26'31"E	687.45
L48	N88°13'02"W	691.39
L49	N00°20'41"W	688.94

DRAWN BY: R.A.K.
SHEET 5
DATE: 9/7/16
OF SHEET 5
SEC-TWN-RGE: 11,13,14-51S-26E & 18-51S-27E



950 Encore Way
Naples, FL 34110
Phone: (239) 254-2000
Florida Certificate of
Authorization No.1772

LINE AND CURVE TABLES COMMUNITY DEVELOPMENT DISTRICT 2

DRAWING NO. B-7366-2
PROJECT NO. 1998070
FILE NAME CDD2 SKD_Rew02.dwg



\\hm-dots\HWDATA-SV2\B200\5-Survey\Projects By Name Of Location\FIDDLERS\1998070X CDD1 CDD2 REVISIONS\SKETCHES\CDD2 Revision 04\CDD2 SKD_Rev02.dwg 9/7/2016 3:44:01 PM Plotted by: Rick Kormell

LEGAL DESCRIPTION:

A PARCEL OF LAND LOCATED IN SECTIONS 11, 13 AND 14, TOWNSHIP 51 SOUTH, RANGE 26 EAST, AND SECTION 18, TOWNSHIP 51 SOUTH, RANGE 27 EAST, COLLIER COUNTY, FLORIDA AND BEING MORE PARTICULARLY DESCRIBED AS FOLLOWS:

BEGIN AT THE NORTHWEST CORNER OF SECTION 13, TOWNSHIP 51 SOUTH, RANGE 26 EAST, COLLIER COUNTY, FLORIDA; THENCE ALONG THE NORTH LINE OF SAID SECTION 13, RUN S89°55'46"E FOR A DISTANCE OF 4688.27 FEET, TO A POINT ON THE SOUTHERLY RIGHT-OF-WAY LINE OF U.S. 41 (TAMiami TRAIL), A 200' WIDE RIGHT-OF-WAY; THENCE ALONG SAID SOUTHERLY RIGHT-OF-WAY LINE, RUN S54°21'29"E FOR A DISTANCE OF 3793.58 FEET; THENCE LEAVING SAID SOUTHERLY RIGHT-OF-WAY LINE, RUN S35°39'17"W FOR A DISTANCE OF 107.40 FEET, TO A POINT OF NON-TANGENTIAL CIRCULAR CURVATURE; THENCE ALONG A CURVE TO THE RIGHT, HAVING A RADIUS OF 350.00 FEET, THROUGH A CENTRAL ANGLE OF 66°22'03", AND BEING SUBTENDED BY A CHORD OF 383.13 FEET, AT A BEARING OF S12°43'35"E, FOR AN ARC LENGTH OF 405.42 FEET, TO A POINT OF TANGENTIAL REVERSE CURVATURE; THENCE ALONG A CURVE TO THE LEFT, HAVING A RADIUS OF 150.00 FEET, THROUGH A CENTRAL ANGLE OF 110°27'50", AND BEING SUBTENDED BY A CHORD OF 246.44 FEET, AT A BEARING OF S34°46'28"E, FOR AN ARC LENGTH OF 289.19 FEET; THENCE RUN N89°59'37"E FOR A DISTANCE OF 58.44 FEET, TO A POINT OF TANGENTIAL CIRCULAR CURVATURE; THENCE ALONG A CURVE TO THE LEFT, HAVING A RADIUS OF 20.00 FEET, THROUGH A CENTRAL ANGLE OF 52°30'17", AND BEING SUBTENDED BY A CHORD OF 17.69 FEET, AT A BEARING OF N63°44'28"E, FOR AN ARC LENGTH OF 18.33 FEET, TO A POINT OF TANGENTIAL REVERSE CURVATURE; THENCE ALONG A CURVE TO THE RIGHT, HAVING A RADIUS OF 95.00 FEET, THROUGH A CENTRAL ANGLE OF 15°00'34", AND BEING SUBTENDED BY A CHORD OF 24.82 FEET, AT A BEARING OF N44°59'37"E, FOR AN ARC LENGTH OF 24.89 FEET, TO A POINT OF TANGENTIAL REVERSE CURVATURE; THENCE ALONG A CURVE TO THE LEFT, HAVING A RADIUS OF 20.00 FEET, THROUGH A CENTRAL ANGLE OF 52°30'17", AND BEING SUBTENDED BY A CHORD OF 17.69 FEET, AT A BEARING OF N26°14'45"E, FOR AN ARC LENGTH OF 18.33 FEET; THENCE RUN N89°59'37"E FOR A DISTANCE OF 100.00 FEET, TO A POINT OF NON-TANGENTIAL CIRCULAR CURVATURE; THENCE ALONG A CURVE TO THE LEFT, HAVING A RADIUS OF 20.00 FEET, THROUGH A CENTRAL ANGLE OF 52°30'17", AND BEING SUBTENDED BY A CHORD OF 17.69 FEET, AT A BEARING OF S26°15'32"E, FOR AN ARC LENGTH OF 18.33 FEET, TO A POINT OF TANGENTIAL REVERSE CURVATURE; THENCE ALONG A CURVE TO THE RIGHT, HAVING A RADIUS OF 95.00 FEET, THROUGH A CENTRAL ANGLE OF 15°00'34", AND BEING SUBTENDED BY A CHORD OF 24.82 FEET, AT A BEARING OF S45°00'23"E, FOR AN ARC LENGTH OF 24.89 FEET, TO A POINT OF TANGENTIAL REVERSE CURVATURE; THENCE ALONG A CURVE TO THE LEFT, HAVING A RADIUS OF 20.00 FEET, THROUGH A CENTRAL ANGLE OF 52°30'11", AND BEING SUBTENDED BY A CHORD OF 17.69 FEET, AT A BEARING OF S63°45'11"E, FOR AN ARC LENGTH OF 18.33 FEET; THENCE RUN S00°00'23"E FOR A DISTANCE OF 130.00 FEET; THENCE RUN N89°59'37"E FOR A DISTANCE OF 113.79 FEET; THENCE RUN S00°00'23"E FOR A DISTANCE OF 150.36 FEET, TO A POINT OF TANGENTIAL CIRCULAR CURVATURE; THENCE ALONG A CURVE TO THE RIGHT, HAVING A RADIUS OF 320.00 FEET, THROUGH A CENTRAL ANGLE OF 29°39'13", AND BEING SUBTENDED BY A CHORD OF 163.77 FEET, AT A BEARING OF S14°49'13"W, FOR AN ARC LENGTH OF 165.62 FEET, TO A POINT OF TANGENTIAL COMPOUND CURVATURE; THENCE ALONG A CURVE TO THE RIGHT, HAVING A RADIUS OF 1190.00 FEET, THROUGH A CENTRAL ANGLE OF 18°36'36", AND BEING SUBTENDED BY A CHORD OF 384.82 FEET, AT A BEARING OF S38°57'08"W, FOR AN ARC LENGTH OF 386.52 FEET, TO A POINT OF NON-TANGENTIAL COMPOUND CURVATURE; THENCE ALONG A CURVE TO THE RIGHT, HAVING A RADIUS OF 45.00 FEET, THROUGH A CENTRAL ANGLE OF 59°39'38", AND BEING SUBTENDED BY A CHORD OF 44.77 FEET, AT A BEARING OF S44°45'59"E, FOR AN ARC LENGTH OF 46.86 FEET, TO A POINT OF REVERSE CURVATURE; THENCE ALONG A CURVE TO THE LEFT, HAVING A RADIUS OF 62.58 FEET, THROUGH A CENTRAL ANGLE OF 18°38'25", AND BEING SUBTENDED BY A CHORD OF 20.27 FEET, AT A BEARING OF S24°15'23"E, FOR AN ARC LENGTH OF 20.36 FEET, TO A POINT OF REVERSE CURVATURE; THENCE ALONG A CURVE TO THE RIGHT, HAVING A RADIUS OF 45.00 FEET, THROUGH A CENTRAL ANGLE OF 61°46'37", AND BEING SUBTENDED BY A CHORD OF 46.20 FEET, AT A BEARING OF S02°41'17"E, FOR AN ARC LENGTH OF 48.52 FEET; THENCE RUN S28°12'02"W FOR A DISTANCE OF 70.46 FEET, TO A POINT OF TANGENTIAL CIRCULAR CURVATURE; THENCE ALONG A CURVE TO THE LEFT, HAVING A RADIUS OF 300.00 FEET, THROUGH A CENTRAL ANGLE OF 26°33'16", AND BEING SUBTENDED BY A CHORD OF 137.80 FEET, AT A BEARING OF S14°55'24"W, FOR AN ARC LENGTH OF 139.04 FEET, TO A POINT OF TANGENTIAL REVERSE CURVATURE; THENCE ALONG A CURVE TO THE RIGHT, HAVING A RADIUS OF 300.00 FEET, THROUGH A CENTRAL ANGLE OF 74°19'47", AND BEING SUBTENDED BY A CHORD OF 362.47 FEET, AT A BEARING OF S38°48'40"W, FOR AN ARC LENGTH OF 389.19 FEET, TO A POINT OF TANGENTIAL REVERSE CURVATURE; THENCE ALONG A CURVE TO THE LEFT, HAVING A RADIUS OF 300.00 FEET, THROUGH A CENTRAL ANGLE OF 85°58'55", AND BEING SUBTENDED BY A CHORD OF 409.13 FEET, AT A BEARING OF S32°59'06"W, FOR AN ARC LENGTH OF 450.20 FEET, TO A POINT OF TANGENTIAL REVERSE CURVATURE; THENCE ALONG A CURVE TO THE RIGHT, HAVING A RADIUS OF 45.00 FEET, THROUGH A CENTRAL ANGLE OF 111°49'56", AND BEING SUBTENDED BY A CHORD OF 74.54 FEET, AT A BEARING OF S45°54'37"W, FOR AN ARC LENGTH OF 87.83 FEET; THENCE RUN N78°10'25"W FOR A DISTANCE OF 194.68 FEET, TO A POINT OF TANGENTIAL CIRCULAR CURVATURE; THENCE ALONG A CURVE TO THE RIGHT, HAVING A RADIUS OF 45.00 FEET, THROUGH A CENTRAL ANGLE OF 116°41'28", AND BEING SUBTENDED BY A CHORD OF 76.61 FEET, AT A BEARING OF N19°49'41"W, FOR AN ARC LENGTH OF 91.65 FEET; THENCE RUN N38°31'03"E FOR A DISTANCE OF 111.08 FEET; THENCE RUN N51°28'57"W FOR A DISTANCE OF 105.27 FEET, TO A POINT OF NON-TANGENTIAL CIRCULAR CURVATURE; THENCE ALONG A CURVE TO THE RIGHT, HAVING A RADIUS OF 365.00 FEET, THROUGH A CENTRAL ANGLE OF 75°57'07", AND BEING SUBTENDED BY A CHORD OF 449.19 FEET, AT A BEARING OF S78°42'20"W, FOR AN ARC LENGTH OF 483.85 FEET, TO A POINT OF NON-TANGENTIAL COMPOUND CURVATURE; THENCE ALONG A CURVE TO THE RIGHT, HAVING A RADIUS OF 45.00 FEET, THROUGH A CENTRAL ANGLE OF 107°40'34", AND BEING SUBTENDED BY A CHORD OF 72.66 FEET, AT A BEARING OF S16°58'44"W, FOR AN ARC LENGTH OF 84.57 FEET, TO A POINT OF NON-TANGENTIAL COMPOUND CURVATURE; THENCE ALONG A CURVE TO THE LEFT, HAVING A RADIUS OF 260.00 FEET, THROUGH A CENTRAL ANGLE OF 74°43'05", AND BEING SUBTENDED BY A CHORD OF 315.54 FEET, AT A BEARING OF S33°46'55"W, FOR AN ARC LENGTH OF 339.06 FEET; THENCE RUN S03°34'37"E FOR A DISTANCE OF 87.88 FEET, TO A POINT OF TANGENTIAL CIRCULAR CURVATURE; THENCE ALONG A CURVE TO THE RIGHT, HAVING A RADIUS OF 225.00 FEET, THROUGH A CENTRAL ANGLE OF 94°37'47", AND BEING SUBTENDED BY A CHORD OF 330.79 FEET, AT A BEARING OF S43°44'16"W, FOR AN ARC LENGTH OF 371.61 FEET; THENCE RUN N88°56'50"W FOR A DISTANCE OF 322.37 FEET, TO A POINT OF TANGENTIAL CIRCULAR CURVATURE; THENCE ALONG A CURVE TO THE RIGHT, HAVING A RADIUS OF 285.00 FEET, THROUGH A CENTRAL ANGLE OF 18°35'10", AND BEING SUBTENDED BY A CHORD OF 92.05 FEET, AT A BEARING OF N79°39'15"W, FOR AN ARC LENGTH OF 92.45 FEET; THENCE RUN N88°56'39"W FOR A DISTANCE OF 664.33 FEET, TO A POINT OF TANGENTIAL CIRCULAR CURVATURE; THENCE ALONG A CURVE TO THE LEFT, HAVING A RADIUS OF 80.00 FEET, THROUGH A CENTRAL ANGLE OF 42°52'13", AND BEING SUBTENDED BY A CHORD OF 58.47 FEET, AT A BEARING OF S69°37'15"W, FOR AN ARC LENGTH OF 59.86 FEET, TO A POINT OF COMPOUND CURVATURE; THENCE ALONG A CURVE TO THE LEFT, HAVING A RADIUS OF 81.20 FEET, THROUGH A CENTRAL ANGLE OF 94°11'25", AND BEING SUBTENDED BY A CHORD OF 118.96 FEET, AT A BEARING OF N84°43'04"W, FOR AN ARC LENGTH OF 133.49 FEET;

DRAWN BY: R.A.K.
DATE: 9/7/16
SHEET 1 OF SHEET 5
SEC-TWN-RGE: 11,13,14-51S-26E & 18-51S-27E

H.M.
HOLE MONTES
ENGINEERS PLANNERS SURVEYORS

950 Encore Way
Naples, FL. 34110
Phone: (239) 254-2000
Florida Certificate of
Authorization No.1772

LEGAL DESCRIPTION
COMMUNITY DEVELOPMENT DISTRICT 2

DRAWING NO.
B-7366-2
PROJECT NO.
1998070
FILE NAME
CDD2 SKD_Rev02.dwg



(CONTINUED FROM SHEET 1 OF 5)

THENCE RUN S04°47'07"W FOR A DISTANCE OF 126.86 FEET; THENCE RUN N77°46'12"W FOR A DISTANCE OF 78.84 FEET; THENCE RUN N88°51'53"W FOR A DISTANCE OF 65.94 FEET; THENCE RUN N84°45'39"W FOR A DISTANCE OF 685.72 FEET; THENCE RUN S05°42'49"W FOR A DISTANCE OF 66.04 FEET; THENCE RUN N84°17'11"W FOR A DISTANCE OF 48.52 FEET; THENCE RUN S28°00'46"W FOR A DISTANCE OF 219.00 FEET; THENCE RUN N61°59'14"W FOR A DISTANCE OF 667.71 FEET, TO A POINT OF TANGENTIAL CIRCULAR CURVATURE; THENCE ALONG A CURVE TO THE LEFT, HAVING A RADIUS OF 200.00 FEET, THROUGH A CENTRAL ANGLE OF 23°47'41", AND BEING SUBTENDED BY A CHORD OF 82.46 FEET, AT A BEARING OF N73°53'04"W, FOR AN ARC LENGTH OF 83.06 FEET, TO A POINT OF TANGENTIAL REVERSE CURVATURE; THENCE ALONG A CURVE TO THE RIGHT, HAVING A RADIUS OF 300.00 FEET, THROUGH A CENTRAL ANGLE OF 16°27'34", AND BEING SUBTENDED BY A CHORD OF 85.89 FEET, AT A BEARING OF N77°33'08"W, FOR AN ARC LENGTH OF 86.18 FEET, TO A POINT OF TANGENTIAL COMPOUND CURVATURE; THENCE ALONG A CURVE TO THE RIGHT, HAVING A RADIUS OF 150.00 FEET, THROUGH A CENTRAL ANGLE OF 61°29'33", AND BEING SUBTENDED BY A CHORD OF 153.37 FEET, AT A BEARING OF N38°34'34"W, FOR AN ARC LENGTH OF 160.99 FEET, TO A POINT OF TANGENTIAL REVERSE CURVATURE; THENCE ALONG A CURVE TO THE LEFT, HAVING A RADIUS OF 137.00 FEET, THROUGH A CENTRAL ANGLE OF 112°55'12", AND BEING SUBTENDED BY A CHORD OF 228.38 FEET, AT A BEARING OF N64°17'24"W, FOR AN ARC LENGTH OF 270.00 FEET; THENCE RUN S59°15'00"W FOR A DISTANCE OF 59.92 FEET, TO A POINT OF TANGENTIAL CIRCULAR CURVATURE; THENCE ALONG A CURVE TO THE RIGHT, HAVING A RADIUS OF 135.00 FEET, THROUGH A CENTRAL ANGLE OF 71°28'36", AND BEING SUBTENDED BY A CHORD OF 157.70 FEET, AT A BEARING OF N85°00'42"W, FOR AN ARC LENGTH OF 168.41 FEET, TO A POINT OF TANGENTIAL REVERSE CURVATURE; THENCE ALONG A CURVE TO THE LEFT, HAVING A RADIUS OF 250.00 FEET, THROUGH A CENTRAL ANGLE OF 38°03'09", AND BEING SUBTENDED BY A CHORD OF 163.00 FEET, AT A BEARING OF N68°17'59"W, FOR AN ARC LENGTH OF 166.04 FEET; THENCE RUN N87°19'33"W FOR A DISTANCE OF 86.72 FEET, TO A POINT OF TANGENTIAL CIRCULAR CURVATURE; THENCE ALONG A CURVE TO THE RIGHT, HAVING A RADIUS OF 10.00 FEET, THROUGH A CENTRAL ANGLE OF 80°16'50", AND BEING SUBTENDED BY A CHORD OF 12.89 FEET, AT A BEARING OF N47°11'08"W, FOR AN ARC LENGTH OF 14.01 FEET; THENCE RUN N07°02'43"W FOR A DISTANCE OF 40.73 FEET, TO A POINT OF TANGENTIAL CIRCULAR CURVATURE; THENCE ALONG A CURVE TO THE LEFT, HAVING A RADIUS OF 100.00 FEET, THROUGH A CENTRAL ANGLE OF 54°47'04", AND BEING SUBTENDED BY A CHORD OF 92.02 FEET, AT A BEARING OF N34°26'15"W, FOR AN ARC LENGTH OF 95.62 FEET, TO A POINT OF TANGENTIAL COMPOUND CURVATURE; THENCE ALONG A CURVE TO THE LEFT, HAVING A RADIUS OF 550.00 FEET, THROUGH A CENTRAL ANGLE OF 13°06'41", AND BEING SUBTENDED BY A CHORD OF 125.58 FEET, AT A BEARING OF N68°23'07"W, FOR AN ARC LENGTH OF 125.86 FEET, TO A POINT OF TANGENTIAL REVERSE CURVATURE; THENCE ALONG A CURVE TO THE RIGHT, HAVING A RADIUS OF 500.00 FEET, THROUGH A CENTRAL ANGLE OF 46°56'36", AND BEING SUBTENDED BY A CHORD OF 398.30 FEET, AT A BEARING OF N51°28'09"W, FOR AN ARC LENGTH OF 409.66 FEET; THENCE RUN N27°59'51"W FOR A DISTANCE OF 47.49 FEET, TO A POINT OF TANGENTIAL CIRCULAR CURVATURE; THENCE ALONG A CURVE TO THE LEFT, HAVING A RADIUS OF 260.00 FEET, THROUGH A CENTRAL ANGLE OF 60°36'37", AND BEING SUBTENDED BY A CHORD OF 262.39 FEET, AT A BEARING OF N58°18'09"W, FOR AN ARC LENGTH OF 275.04 FEET; THENCE RUN N88°36'28"W FOR A DISTANCE OF 125.93 FEET, TO A POINT OF TANGENTIAL CIRCULAR CURVATURE; THENCE ALONG A CURVE TO THE LEFT, HAVING A RADIUS OF 100.00 FEET, THROUGH A CENTRAL ANGLE OF 69°20'20", AND BEING SUBTENDED BY A CHORD OF 113.77 FEET, AT A BEARING OF S56°43'22"W, FOR AN ARC LENGTH OF 121.02 FEET, TO A POINT OF TANGENTIAL REVERSE CURVATURE; THENCE ALONG A CURVE TO THE RIGHT, HAVING A RADIUS OF 200.00 FEET, THROUGH A CENTRAL ANGLE OF 48°41'47", AND BEING SUBTENDED BY A CHORD OF 164.91 FEET, AT A BEARING OF S46°24'06"W, FOR AN ARC LENGTH OF 169.98 FEET, TO A POINT OF TANGENTIAL COMPOUND CURVATURE; THENCE ALONG A CURVE TO THE RIGHT, HAVING A RADIUS OF 700.00 FEET, THROUGH A CENTRAL ANGLE OF 13°28'58", AND BEING SUBTENDED BY A CHORD OF 164.34 FEET, AT A BEARING OF S77°29'29"W, FOR AN ARC LENGTH OF 164.72 FEET; THENCE RUN S84°13'58"W FOR A DISTANCE OF 169.90 FEET, TO A POINT OF TANGENTIAL CIRCULAR CURVATURE; THENCE ALONG A CURVE TO THE LEFT, HAVING A RADIUS OF 250.00 FEET, THROUGH A CENTRAL ANGLE OF 34°43'19", AND BEING SUBTENDED BY A CHORD OF 149.20 FEET, AT A BEARING OF S66°52'18"W, FOR AN ARC LENGTH OF 151.50 FEET, TO A POINT OF TANGENTIAL REVERSE CURVATURE; THENCE ALONG A CURVE TO THE RIGHT, HAVING A RADIUS OF 475.00 FEET, THROUGH A CENTRAL ANGLE OF 62°08'00", AND BEING SUBTENDED BY A CHORD OF 490.23 FEET, AT A BEARING OF S80°34'39"W, FOR AN ARC LENGTH OF 515.11 FEET, TO A POINT OF TANGENTIAL REVERSE CURVATURE; THENCE ALONG A CURVE TO THE LEFT, HAVING A RADIUS OF 200.00 FEET, THROUGH A CENTRAL ANGLE OF 65°24'33", AND BEING SUBTENDED BY A CHORD OF 216.12 FEET, AT A BEARING OF S78°56'22"W, FOR AN ARC LENGTH OF 228.32 FEET, TO A POINT OF TANGENTIAL REVERSE CURVATURE; THENCE ALONG A CURVE TO THE RIGHT, HAVING A RADIUS OF 150.00 FEET, THROUGH A CENTRAL ANGLE OF 43°19'39", AND BEING SUBTENDED BY A CHORD OF 110.75 FEET, AT A BEARING OF S67°53'55"W, FOR AN ARC LENGTH OF 113.43 FEET; THENCE RUN S89°33'44"W FOR A DISTANCE OF 33.81 FEET; THENCE RUN N00°25'58"W FOR A DISTANCE OF 2674.12 FEET; THENCE RUN N26°57'22"W FOR A DISTANCE OF 100.00 FEET, TO A POINT OF NON-TANGENTIAL CIRCULAR CURVATURE; THENCE ALONG A CURVE TO THE RIGHT, HAVING A RADIUS OF 709.89 FEET, THROUGH A CENTRAL ANGLE OF 15°24'01", AND BEING SUBTENDED BY A CHORD OF 190.23 FEET, AT A BEARING OF S70°44'39"W, FOR AN ARC LENGTH OF 190.81 FEET, TO A POINT ON THE EAST LINE OF THE NORTHEAST QUARTER OF SECTION 14, TOWNSHIP 51 SOUTH, RANGE 26 EAST; THENCE ALONG SAID EAST LINE OF THE NORTHEAST QUARTER OF SECTION 14, RUN N00°25'37"W FOR A DISTANCE OF 495.65 FEET, TO THE SOUTHEAST CORNER OF THE NORTHEAST QUARTER OF THE NORTHEAST QUARTER OF SAID SECTION 14; THENCE ALONG THE SOUTH LINE OF THE NORTHEAST QUARTER OF THE NORTHEAST QUARTER OF SAID SECTION 14, RUN N88°20'43"W FOR A DISTANCE OF 693.91 FEET, TO THE SOUTHWEST CORNER OF THE EAST HALF OF THE NORTHEAST QUARTER OF THE NORTHEAST QUARTER OF SAID SECTION 14; THENCE LEAVING SAID SECTION LINE, RUN N52°51'27"W FOR A DISTANCE OF 171.83 FEET; THENCE RUN S37°08'33"W FOR A DISTANCE OF 122.51 FEET, TO A POINT ON THE SOUTH LINE OF THE NORTH QUARTER OF SAID SECTION 14; THENCE ALONG SAID SOUTH LINE OF THE NORTH QUARTER OF SAID SECTION 14, RUN N88°20'43"W FOR A DISTANCE OF 2557.48 FEET; THENCE ALONG THE WEST LINE OF THE EAST HALF OF THE NORTHEAST QUARTER OF THE NORTHWEST QUARTER OF SAID SECTION 14, RUN N00°02'07"E FOR A DISTANCE OF 1389.87 FEET; THENCE LEAVING SAID QUARTER LINE, RUN N88°05'43"W FOR A DISTANCE OF 590.35 FEET; THENCE RUN N01°43'02"E FOR A DISTANCE OF 1493.79 FEET; THENCE RUN S88°09'55"E FOR A DISTANCE OF 1274.00 FEET; THENCE RUN S88°09'46"E FOR A DISTANCE OF 1374.52 FEET; THENCE ALONG THE WEST LINE OF THE EAST HALF OF THE SOUTHEAST QUARTER OF SECTION 11 AND THE WEST LINE OF THE SOUTHEAST QUARTER OF THE NORTHEAST QUARTER OF SAID SECTION 11, TOWNSHIP 51 SOUTH, RANGE 26 EAST, RUN N01°13'54"E FOR A DISTANCE OF 1860.10 FEET; THENCE LEAVING SAID QUARTER LINE, RUN S88°46'12"E FOR A DISTANCE OF 518.33 FEET, TO A POINT OF NON-TANGENTIAL CIRCULAR CURVATURE; THENCE ALONG A CURVE TO THE RIGHT, HAVING A RADIUS OF 350.00 FEET, THROUGH A CENTRAL ANGLE OF 37°05'11", AND BEING SUBTENDED BY A CHORD OF 222.61 FEET, AT A BEARING OF N17°05'16"E, FOR AN ARC LENGTH OF 226.55 FEET; THENCE RUN N35°37'51"E FOR A DISTANCE OF 214.87 FEET, TO A POINT ON SAID SOUTHERLY RIGHT-OF-WAY LINE OF U.S. 41;

DRAWN BY: R.A.K.
SHEET 2
DATE: 9/7/16
OF SHEET 5
SEC-TWN-RGE: 11,13,14-51S-26E & 18-51S-27E



950 Encore Way
Naples, FL 34110
Phone: (239) 254-2000
Florida Certificate of
Authorization No.1772

LEGAL DESCRIPTION

COMMUNITY DEVELOPMENT DISTRICT 2

DRAWING NO. B-7366-2
PROJECT NO. 1998070
FILE NAME CDD2 SKD_Ren02.dwg



(CONTINUED FROM SHEET 2 OF 5)

THENCE ALONG SAID SOUTHERLY RIGHT-OF-WAY LINE, RUN S54°21'53"E FOR A DISTANCE OF 807.97 FEET, TO AN INTERSECTION WITH THE EAST LINE OF THE NORTHEAST QUARTER OF SAID SECTION 11; THENCE ALONG SAID QUARTER LINE, RUN S01°00'06"W FOR A DISTANCE OF 3308.61 FEET, TO THE POINT OF BEGINNING OF THE PARCEL HEREIN DESCRIBED; CONTAINING 1,070.640 ACRES.

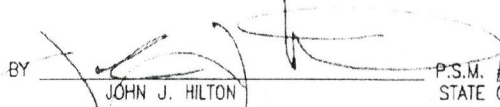
LESS AND EXCEPT:


A PARCEL OF LAND LOCATED IN A PORTION OF SECTION 14, TOWNSHIP 51 SOUTH, RANGE 26 EAST, COLLIER COUNTY, FLORIDA, BEING MORE PARTICULARLY DESCRIBED AS FOLLOWS:

THE NORTHEAST 1/4 OF THE NORTHEAST 1/4 OF THE NORTHEAST 1/4 OF SECTION 14, TOWNSHIP 51 SOUTH, RANGE 26 EAST, COLLIER COUNTY, FLORIDA, CONTAINING 10.906 ACRES, MORE OR LESS.

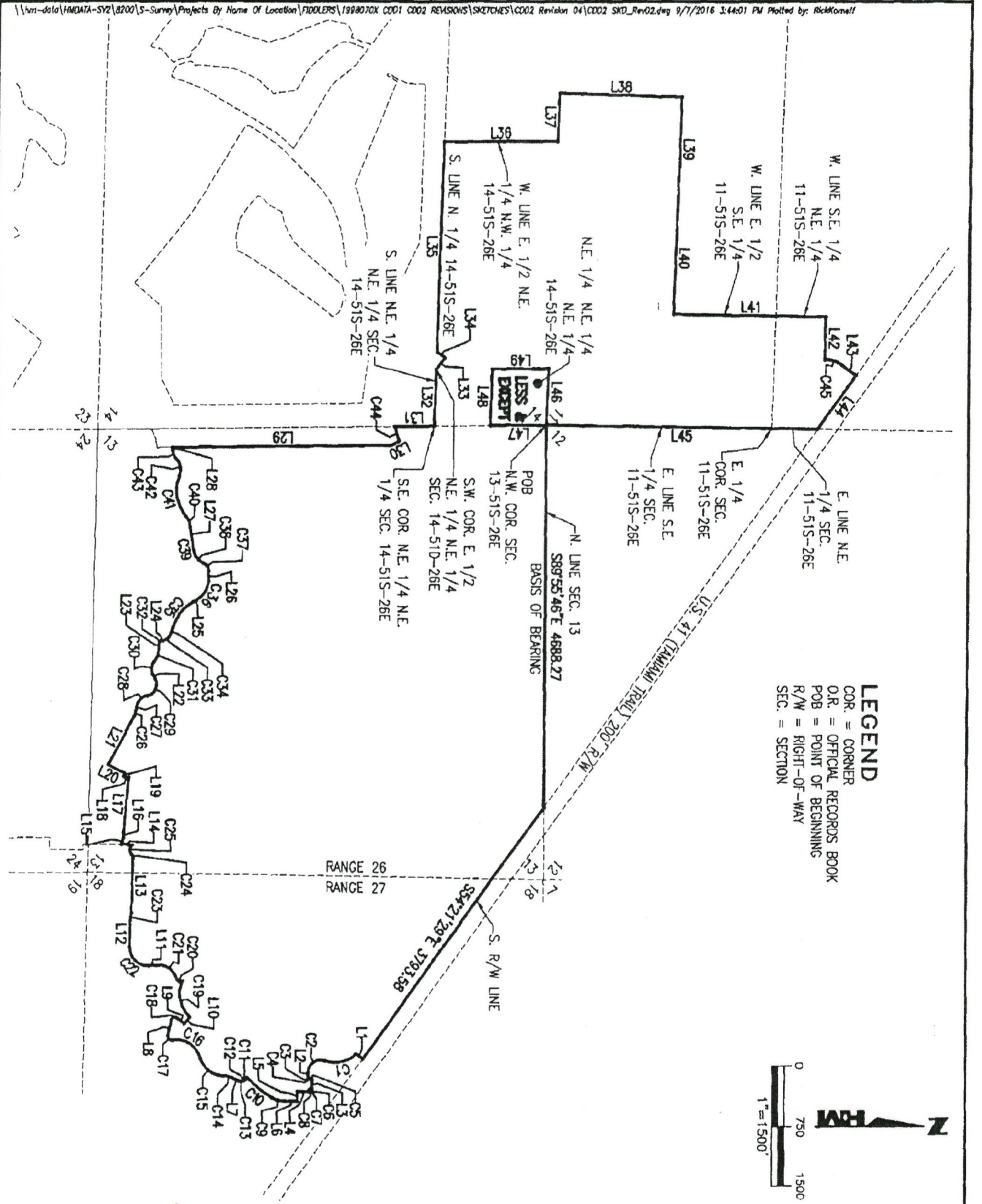
TOTAL DESCRIBED AREA = 1,059.734 ACRES.

HOLE MONTES, INC.
CERTIFICATE OF AUTHORIZATION NUMBER LB 1772

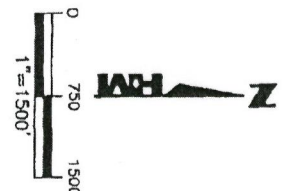
BY  P.S.M. #6278
JOHN J. HILTON STATE OF FLORIDA


DRAWN BY: R.A.K.	DATE: 9/7/16	 HOLE MONTES ENGINEERS PLANNERS SURVEYORS	950 Encore Way Naples, FL. 34110 Phone: (239) 254-2000 Florida Certificate of Authorization No.1772	LEGAL DESCRIPTION COMMUNITY DEVELOPMENT DISTRICT 2	DRAWING NO. B-7366-2
SHEET 3	OF SHEET 5				PROJECT NO. 1998070
SEC-TWN-RGE: 11,13,14-51S-26E & 18-51S-27E					FILE NAME CDD2 SKD_Rev02.dwg





LEGEND
 COR. = CORNER
 O.R. = OFFICIAL RECORDS BOOK
 POB = POINT OF BEGINNING
 R/W = RIGHT-OF-WAY
 SEC. = SECTION



DRAWN BY: R.A.K.	DATE: 9/7/16	 HOLE MONTES ENGINEERS PLANNERS SURVEYORS	950 Encore Way Naples, FL. 34110 Phone: (239) 254-2000 Florida Certificate of Authorization No.1772	SKETCH OF LEGAL DESCRIPTION COMMUNITY DEVELOPMENT DISTRICT 2	DRAWING NO. B-7366-2
SHEET # 4	OF SHEET 5				PROJECT NO. 1998070
SEC-TWN-RGE: 11,13,14-51S-26E & 18-51S-27E					FILE NAME C002 SKD_Rer02.dwg

CURVE TABLE					
CURVE	RADIUS	DELTA	CHORD	CHORD BEARING	ARC LENGTH
C1	350.00	66°22'03"	383.13	S12°43'35"E	405.42
C2	150.00	110°27'50"	246.44	S34°46'28"E	289.19
C3	20.00	52°30'17"	17.69	N63°44'28"E	18.33
C4	95.00	15°00'34"	24.82	N44°59'37"E	24.89
C5	20.00	52°30'17"	17.69	N26°14'45"E	18.33
C6	20.00	52°30'17"	17.69	S26°15'32"E	18.33
C7	95.00	15°00'34"	24.82	S45°00'23"E	24.89
C8	20.00	52°30'11"	17.69	S63°45'11"E	18.33
C9	320.00	29°39'13"	163.77	S14°49'13"W	165.82
C10	1190.00	18°38'36"	384.82	S38°57'08"W	386.52
C11	45.00	59°39'36"	44.77	S44°45'59"E	46.86
C12	62.58	18°38'25"	20.27	S24°15'23"E	20.36
C13	45.00	61°46'37"	46.20	S02°41'17"E	48.52
C14	300.00	28°33'16"	137.80	S14°55'24"W	139.04
C15	300.00	74°19'47"	362.47	S38°48'40"W	389.19
C16	300.00	85°58'55"	409.13	S32°59'06"W	450.20
C17	45.00	111°49'56"	74.54	S45°54'37"W	87.83
C18	45.00	116°41'28"	76.61	N19°49'41"W	91.65
C19	365.00	75°57'07"	449.19	S78°42'20"W	483.85
C20	45.00	107°40'34"	72.68	S16°58'44"W	84.57
C21	260.00	74°43'05"	315.54	S33°46'55"W	339.06
C22	225.00	94°37'47"	330.79	S43°44'16"W	371.61
C23	285.00	18°35'10"	92.05	N79°39'15"W	92.45

CURVE TABLE					
CURVE	RADIUS	DELTA	CHORD	CHORD BEARING	ARC LENGTH
C24	80.00	42°52'13"	58.47	S69°37'15"W	59.86
C25	81.20	94°11'26"	118.96	N84°43'04"W	133.49
C26	200.00	23°47'41"	82.46	N73°53'04"W	83.06
C27	300.00	16°27'34"	85.89	N77°33'08"W	86.18
C28	150.00	61°29'33"	153.37	N38°34'34"W	160.99
C29	137.00	112°55'12"	228.38	N64°17'24"W	270.00
C30	135.00	71°28'36"	157.70	N85°00'42"W	168.41
C31	250.00	38°03'09"	163.00	N88°17'59"W	166.04
C32	10.00	80°16'50"	12.89	N47°11'08"W	14.01
C33	100.00	54°47'04"	92.02	N34°26'15"W	95.62
C34	550.00	13°06'41"	125.58	N68°23'07"W	125.86
C35	500.00	46°56'36"	398.30	N51°28'09"W	409.66
C36	260.00	60°36'37"	262.39	N58°18'09"W	275.04
C37	100.00	69°20'20"	113.77	S56°43'22"W	121.02
C38	200.00	48°41'47"	164.91	S46°24'06"W	169.98
C39	700.00	13°28'58"	184.34	S77°29'29"W	184.72
C40	250.00	34°43'19"	149.20	S66°52'18"W	151.50
C41	475.00	62°08'00"	490.23	S80°34'39"W	515.11
C42	200.00	65°24'33"	216.12	S78°56'22"W	228.32
C43	150.00	43°19'39"	110.75	S67°53'55"W	113.43
C44	709.89	15°24'01"	190.23	S70°44'39"W	190.81
C45	350.00	37°05'11"	222.61	N17°05'16"E	226.55

LINE TABLE		
LINE	DIRECTION	LENGTH
L1	S35°39'17"W	107.40
L2	N89°59'37"E	58.44
L3	N89°59'37"E	100.00
L4	S00°00'23"E	130.00
L5	N89°59'37"E	113.79
L6	S00°00'23"E	150.36
L7	S28°12'02"W	70.46
L8	N78°10'25"W	194.68
L9	N38°31'03"E	111.08
L10	N51°28'57"W	105.27
L11	S03°34'37"E	87.88
L12	N88°56'50"W	322.37
L13	N88°56'39"W	664.33

LINE TABLE		
LINE	DIRECTION	LENGTH
L14	S04°47'07"W	126.86
L15	N77°46'12"W	78.84
L16	N88°51'53"W	85.94
L17	N84°45'39"W	685.72
L18	S05°42'49"W	66.04
L19	N84°17'11"W	48.52
L20	S28°00'46"W	219.00
L21	N61°59'14"W	667.71
L22	S59°15'00"W	59.92
L23	N87°19'33"W	86.72
L24	N07°02'43"W	40.73
L25	N27°59'51"W	47.49
L26	N88°36'28"W	125.93

LINE TABLE		
LINE	DIRECTION	LENGTH
L27	S84°13'58"W	169.90
L28	S89°33'44"W	33.81
L29	N00°25'58"W	2674.12
L30	N26°57'22"W	100.00
L31	N00°25'37"W	495.65
L32	N88°20'43"W	693.91
L33	N52°51'27"W	171.83
L34	S37°08'33"W	122.51
L35	N88°20'43"W	2557.48
L36	N00°02'07"E	1389.87
L37	N88°05'43"W	590.35
L38	N01°43'02"E	1493.79
L39	S88°09'55"E	1274.00

LINE TABLE		
LINE	DIRECTION	LENGTH
L40	S88°09'46"E	1374.62
L41	N01°13'54"E	1860.10
L42	S88°46'12"E	518.33
L43	N35°37'51"E	214.87
L44	S54°21'53"E	807.97
L45	S01°00'06"W	3308.61
L46	S88°05'23"E	690.28
L47	S00°26'31"E	687.45
L48	N88°13'02"W	691.39
L49	N00°20'41"W	688.94

DRAWN BY: R.A.K.
SHEET 5
DATE: 9/7/16
OF SHEET 5
SEC-TWN-RGE: 11,13,14-51S-26E & 18-51S-27E



950 Encore Way
Naples, FL 34110
Phone: (239) 254-2000
Florida Certificate of
Authorization No.1772

LINE AND CURVE TABLES COMMUNITY DEVELOPMENT DISTRICT 2

DRAWING NO. B-7366-2
PROJECT NO. 1998070
FILE NAME CDD2 SKD_Rev02.dwg



ALL LESS AND EXCEPT THE FOLLOWING DESCRIBED
PARCEL OF LAND

RHODES & RHODES LAND SURVEYING, INC.

28100 BONITA GRANDE DRIVE SUITE 107
BONITA SPRINGS, FLORIDA 34135
PHONE (239) 405-8166 FAX (239) 405-8163

LEGAL DESCRIPTION

A PARCEL OF LAND LOCATED IN SECTION 13, TOWNSHIP 51 SOUTH, RANGE 26 EAST AND SECTIONS 18 AND 19, TOWNSHIP 51 SOUTH, RANGE 27 EAST, COLLIER COUNTY, FLORIDA, BEING MORE PARTICULARLY DESCRIBED AS FOLLOWS:

COMMENCE AT THE WEST QUARTER CORNER OF SECTION 18, TOWNSHIP 51 SOUTH, RANGE 27 EAST, COLLIER COUNTY, FLORIDA; THENCE RUN ALONG THE WEST LINE OF SOUTHWEST QUARTER OF SAID SECTION 18, SOUTH 00°20'46" WEST, A DISTANCE OF 2,233.65 FEET TO THE POINT OF BEGINNING OF THE PARCEL OF LAND HEREIN DESCRIBED; THENCE NORTH 88°56'16" WEST, A DISTANCE OF 161.44 FEET TO A POINT OF CURVATURE; THENCE WESTERLY, 59.86 FEET ALONG THE ARC OF A CIRCULAR CURVE, CONCAVE SOUTHERLY, HAVING A RADIUS OF 80.00 FEET, THROUGH A CENTRAL ANGLE OF 42°52'13" AND BEING SUBTENDED BY A CHORD THAT BEARS SOUTH 69°37'38" WEST, 58.47 FEET TO A POINT OF REVERSE CURVATURE; THENCE WESTERLY, 133.49 FEET ALONG THE ARC OF A CIRCULAR CURVE, CONCAVE NORTHERLY, HAVING A RADIUS OF 81.20 FEET, THROUGH A CENTRAL ANGLE OF 94°11'25" AND BEING SUBTENDED BY A CHORD THAT BEARS NORTH 84°42'41" WEST, 118.96 FEET; THENCE SOUTH 04°47'30" WEST, A DISTANCE OF 125.63 FEET; THENCE NORTH 84°46'05" WEST, A DISTANCE OF 9.99 FEET; THENCE NORTH 77°45'48" WEST, A DISTANCE OF 68.76 FEET; THENCE NORTH 88°51'30" WEST, A DISTANCE OF 65.94 FEET; THENCE NORTH 84°45'16" WEST, A DISTANCE OF 595.29 FEET; THENCE NORTH 08°46'55" EAST, A DISTANCE OF 15.19 FEET; THENCE NORTH 81°13'05" WEST, A DISTANCE OF 86.83 FEET TO A POINT OF CURVATURE; THENCE SOUTHWESTERLY, 40.61 FEET ALONG THE ARC OF A CIRCULAR CURVE, CONCAVE SOUTHEASTERLY, HAVING A RADIUS OF 25.00 FEET, THROUGH A CENTRAL ANGLE OF 93°04'05" AND BEING SUBTENDED BY A CHORD THAT BEARS SOUTH 52°14'52" WEST, 36.29 FEET; THENCE SOUTH 05°42'49" WEST, A DISTANCE OF 16.93 FEET TO A POINT OF CURVATURE; THENCE SOUTHWESTERLY, 49.00 FEET ALONG THE ARC OF A CIRCULAR CURVE, CONCAVE NORTHWESTERLY, HAVING A RADIUS OF 25.00 FEET, THROUGH A CENTRAL ANGLE OF 112°17'57" AND BEING SUBTENDED BY A CHORD THAT BEARS SOUTH 61°51'48" WEST, 41.52 FEET; THENCE NORTH 61°59'14" WEST, A DISTANCE OF 75.11 FEET TO A POINT OF CURVATURE; THENCE NORTHERLY, 42.43 FEET ALONG THE ARC OF A CIRCULAR CURVE, CONCAVE EASTERLY, HAVING A RADIUS OF 30.00 FEET, THROUGH A CENTRAL ANGLE OF 81°02'25" AND BEING SUBTENDED BY A CHORD THAT BEARS NORTH 21°28'01" WEST, 38.98 FEET TO A POINT OF REVERSE CURVATURE; THENCE NORTHWESTERLY, 213.13 FEET ALONG THE ARC OF A CIRCULAR CURVE, CONCAVE SOUTHWESTERLY, HAVING A RADIUS OF 90.00 FEET, THROUGH A CENTRAL ANGLE OF 135°41'08" AND BEING SUBTENDED BY A CHORD THAT BEARS NORTH 48°47'22" WEST, 166.71 FEET TO A POINT OF REVERSE CURVATURE; THENCE WESTERLY, 61.99 FEET ALONG THE ARC OF A CIRCULAR CURVE, CONCAVE NORTHERLY, HAVING A RADIUS OF 65.00 FEET, THROUGH A CENTRAL ANGLE OF 54°38'43" AND BEING SUBTENDED BY A CHORD THAT BEARS NORTH 89°18'35" WEST, 59.67 FEET; THENCE NORTH 61°59'14" WEST, A DISTANCE OF 36.90 FEET; THENCE NORTH 21°37'59" EAST, A DISTANCE OF 250.74 FEET TO A POINT OF CURVATURE; THENCE NORTHERLY, 121.17 FEET ALONG THE ARC OF A CIRCULAR CURVE, CONCAVE WESTERLY, HAVING A RADIUS OF 230.00 FEET, THROUGH A CENTRAL ANGLE OF 30°11'06" AND BEING SUBTENDED BY A CHORD THAT BEARS NORTH 06°32'26" EAST, 119.77 FEET TO A POINT OF REVERSE CURVATURE; THENCE NORTHERLY, 34.24 FEET ALONG THE ARC OF A CIRCULAR CURVE, CONCAVE EASTERLY, HAVING A RADIUS OF 65.00 FEET, THROUGH A CENTRAL ANGLE OF 30°11'06" AND BEING SUBTENDED BY A CHORD THAT BEARS NORTH 06°32'26" EAST, 33.85 FEET; THENCE NORTH 21°37'59" EAST, A DISTANCE OF 100.89 FEET TO A POINT OF CURVATURE; THENCE NORTHERLY, 162.28 FEET ALONG THE ARC OF A CIRCULAR CURVE, CONCAVE WESTERLY, HAVING A RADIUS OF 1,190.00 FEET, THROUGH A CENTRAL ANGLE OF 07°48'48" AND BEING SUBTENDED BY A CHORD THAT BEARS NORTH 17°43'35" EAST, 162.15 FEET TO A POINT OF REVERSE CURVATURE; THENCE NORTHERLY, 138.92 FEET ALONG THE ARC OF A CIRCULAR CURVE, CONCAVE EASTERLY, HAVING A RADIUS OF 510.00 FEET, THROUGH A CENTRAL ANGLE OF 15°36'23" AND BEING SUBTENDED BY A CHORD THAT BEARS NORTH 21°37'22" EAST, 138.49 FEET TO A POINT OF REVERSE CURVATURE; THENCE NORTHERLY, 376.91 FEET ALONG THE ARC OF A CIRCULAR CURVE, CONCAVE WESTERLY, HAVING A RADIUS OF 890.00 FEET, THROUGH A CENTRAL ANGLE OF 24°15'51" AND BEING SUBTENDED BY A CHORD THAT BEARS NORTH 17°17'38" EAST, 374.10 FEET TO A POINT OF



RHODES & RHODES LAND SURVEYING, INC.

28100 BONITA GRANDE DRIVE SUITE 107
BONITA SPRINGS, FLORIDA 34135
PHONE (239) 405-8166 FAX (239) 405-8163

REVERSE CURVATURE; THENCE NORTHEASTERLY, 56.89 FEET ALONG THE ARC OF A CIRCULAR CURVE, CONCAVE SOUTHEASTERLY, HAVING A RADIUS OF 50.00 FEET, THROUGH A CENTRAL ANGLE OF 65°11'08" AND BEING SUBTENDED BY A CHORD THAT BEARS NORTH 37°45'17" EAST, 53.87 FEET; THENCE NORTH 68°59'19" EAST, A DISTANCE OF 25.61 FEET; THENCE SOUTH 51°48'02" EAST, A DISTANCE OF 171.93 FEET TO A POINT ON A NON-TANGENTIAL CURVE; THENCE NORTHEASTERLY, 143.41 FEET ALONG THE ARC OF A CIRCULAR CURVE, CONCAVE SOUTHEASTERLY, HAVING A RADIUS OF 895.00 FEET, THROUGH A CENTRAL ANGLE OF 09°10'51" AND BEING SUBTENDED BY A CHORD THAT BEARS NORTH 44°11'54" EAST, 143.26 FEET TO A POINT OF REVERSE CURVATURE; THENCE NORTHEASTERLY, 157.90 FEET ALONG THE ARC OF A CIRCULAR CURVE, CONCAVE NORTHWESTERLY, HAVING A RADIUS OF 668.60 FEET, THROUGH A CENTRAL ANGLE OF 13°31'53" AND BEING SUBTENDED BY A CHORD THAT BEARS NORTH 42°01'23" EAST, 157.53 FEET TO A POINT OF COMPOUND CURVATURE; THENCE NORTHEASTERLY, 185.88 FEET ALONG THE ARC OF A CIRCULAR CURVE, CONCAVE NORTHWESTERLY, HAVING A RADIUS OF 500.00 FEET, THROUGH A CENTRAL ANGLE OF 21°18'01" AND BEING SUBTENDED BY A CHORD THAT BEARS NORTH 24°36'26" EAST, 184.81 FEET; THENCE NORTH 13°57'25" EAST, A DISTANCE OF 434.86 FEET TO A POINT OF CURVATURE; THENCE NORTHEASTERLY, 389.88 FEET ALONG THE ARC OF A CIRCULAR CURVE, CONCAVE SOUTHEASTERLY, HAVING A RADIUS OF 495.00 FEET, THROUGH A CENTRAL ANGLE OF 45°07'42" AND BEING SUBTENDED BY A CHORD THAT BEARS NORTH 36°31'16" EAST, 379.88 FEET TO A POINT OF REVERSE CURVATURE; THENCE NORTHEASTERLY, 151.58 FEET ALONG THE ARC OF A CIRCULAR CURVE, CONCAVE NORTHWESTERLY, HAVING A RADIUS OF 150.00 FEET, THROUGH A CENTRAL ANGLE OF 57°54'01" AND BEING SUBTENDED BY A CHORD THAT BEARS NORTH 30°08'06" EAST, 145.21 FEET TO A POINT ON A NON-TANGENTIAL CURVE; THENCE EASTERLY, 303.95 FEET ALONG THE ARC OF A CIRCULAR CURVE, CONCAVE NORTHERLY, HAVING A RADIUS OF 255.00 FEET, THROUGH A CENTRAL ANGLE OF 68°17'37" AND BEING SUBTENDED BY A CHORD THAT BEARS NORTH 72°41'19" EAST, 286.27 FEET TO A POINT OF REVERSE CURVATURE; THENCE NORTHEASTERLY, 214.76 FEET ALONG THE ARC OF A CIRCULAR CURVE, CONCAVE SOUTHEASTERLY, HAVING A RADIUS OF 250.00 FEET, THROUGH A CENTRAL ANGLE OF 49°13'09" AND BEING SUBTENDED BY A CHORD THAT BEARS NORTH 63°09'05" EAST, 208.22 FEET TO A POINT OF REVERSE CURVATURE; THENCE NORTHEASTERLY, 248.23 FEET ALONG THE ARC OF A CIRCULAR CURVE, CONCAVE NORTHWESTERLY, HAVING A RADIUS OF 210.00 FEET, THROUGH A CENTRAL ANGLE OF 67°43'34" AND BEING SUBTENDED BY A CHORD THAT BEARS NORTH 53°53'52" EAST, 234.03 FEET TO A POINT OF REVERSE CURVATURE; THENCE NORTHEASTERLY, 122.11 FEET ALONG THE ARC OF A CIRCULAR CURVE, CONCAVE SOUTHEASTERLY, HAVING A RADIUS OF 100.00 FEET, THROUGH A CENTRAL ANGLE OF 69°57'55" AND BEING SUBTENDED BY A CHORD THAT BEARS NORTH 55°01'02" EAST, 114.67 FEET TO A POINT OF REVERSE CURVATURE; THENCE EASTERLY, 57.32 FEET ALONG THE ARC OF A CIRCULAR CURVE, CONCAVE NORTHERLY, HAVING A RADIUS OF 100.00 FEET, THROUGH A CENTRAL ANGLE OF 32°50'27" AND BEING SUBTENDED BY A CHORD THAT BEARS NORTH 73°34'46" EAST, 56.54 FEET; THENCE NORTH 57°09'32" EAST, A DISTANCE OF 115.02 FEET; THENCE NORTH 04°35'06" WEST, A DISTANCE OF 86.36 FEET TO A POINT ON A NON-TANGENTIAL CURVE; THENCE NORTHEASTERLY, 528.63 FEET ALONG THE ARC OF A CIRCULAR CURVE, CONCAVE NORTHWESTERLY, HAVING A RADIUS OF 830.00 FEET, THROUGH A CENTRAL ANGLE OF 36°29'32" AND BEING SUBTENDED BY A CHORD THAT BEARS NORTH 66°47'03" EAST, 519.74 FEET TO A POINT OF REVERSE CURVATURE; THENCE EASTERLY, 403.75 FEET ALONG THE ARC OF A CIRCULAR CURVE, CONCAVE SOUTHERLY, HAVING A RADIUS OF 300.00 FEET, THROUGH A CENTRAL ANGLE OF 77°06'37" AND BEING SUBTENDED BY A CHORD THAT BEARS NORTH 87°05'36" EAST, 373.96 FEET; THENCE NORTH 35°38'54" EAST, A DISTANCE OF 200.00 FEET; THENCE SOUTH 54°21'06" EAST, A DISTANCE OF 910.68 FEET; THENCE SOUTH 35°39'40" WEST, A DISTANCE OF 103.80 FEET TO A POINT ON A NON-TANGENTIAL CURVE; THENCE SOUTHERLY, 405.42 FEET ALONG THE ARC OF A CIRCULAR CURVE, CONCAVE WESTERLY, HAVING A RADIUS OF 350.00 FEET, THROUGH A CENTRAL ANGLE OF 66°22'03" AND BEING SUBTENDED BY A CHORD THAT BEARS SOUTH 12°43'12" EAST, 383.13 FEET TO A POINT OF REVERSE CURVATURE; THENCE SOUTHEASTERLY, 289.19 FEET ALONG THE ARC OF A CIRCULAR CURVE, CONCAVE NORTHEASTERLY, HAVING A RADIUS OF 150.00 FEET, THROUGH A CENTRAL ANGLE OF 110°27'50" AND BEING SUBTENDED BY A CHORD THAT BEARS SOUTH 34°46'05" EAST, 246.44 FEET; THENCE SOUTH 90°00'00" EAST, A DISTANCE OF 58.44 FEET TO A POINT OF CURVATURE; THENCE NORTHEASTERLY, 18.33 FEET ALONG THE ARC OF A CIRCULAR



RHODES & RHODES LAND SURVEYING, INC.

28100 BONITA GRANDE DRIVE SUITE 107
BONITA SPRINGS, FLORIDA 34135
PHONE (239) 405-8166 FAX (239) 405-8163

CURVE, CONCAVE NORTHWESTERLY, HAVING A RADIUS OF 20.00 FEET, THROUGH A CENTRAL ANGLE OF 52°30'17" AND BEING SUBTENDED BY A CHORD THAT BEARS NORTH 63°44'51" EAST, 17.69 FEET TO A POINT OF REVERSE CURVATURE; THENCE NORTHEASTERLY, 24.89 FEET ALONG THE ARC OF A CIRCULAR CURVE, CONCAVE SOUTHEASTERLY, HAVING A RADIUS OF 95.00 FEET, THROUGH A CENTRAL ANGLE OF 15°00'34" AND BEING SUBTENDED BY A CHORD THAT BEARS NORTH 45°00'00" EAST, 24.82 FEET TO A POINT OF REVERSE CURVATURE; THENCE NORTHEASTERLY, 18.33 FEET ALONG THE ARC OF A CIRCULAR CURVE, CONCAVE NORTHWESTERLY, HAVING A RADIUS OF 20.00 FEET, THROUGH A CENTRAL ANGLE OF 52°30'17" AND BEING SUBTENDED BY A CHORD THAT BEARS NORTH 26°15'09" EAST, 17.69 FEET; THENCE SOUTH 90°00'00" EAST, A DISTANCE OF 100.00 FEET TO A POINT ON A NON-TANGENTIAL CURVE; THENCE SOUTHEASTERLY, 18.33 FEET ALONG THE ARC OF A CIRCULAR CURVE, CONCAVE NORTHEASTERLY, HAVING A RADIUS OF 20.00 FEET, THROUGH A CENTRAL ANGLE OF 52°30'17" AND BEING SUBTENDED BY A CHORD THAT BEARS SOUTH 26°15'09" EAST, 17.69 FEET TO A POINT OF REVERSE CURVATURE; THENCE SOUTHEASTERLY, 24.89 FEET ALONG THE ARC OF A CIRCULAR CURVE, CONCAVE SOUTHWESTERLY, HAVING A RADIUS OF 95.00 FEET, THROUGH A CENTRAL ANGLE OF 15°00'34" AND BEING SUBTENDED BY A CHORD THAT BEARS SOUTH 45°00'00" EAST, 24.82 FEET TO A POINT OF REVERSE CURVATURE; THENCE SOUTHEASTERLY, 18.33 FEET ALONG THE ARC OF A CIRCULAR CURVE, CONCAVE NORTHEASTERLY, HAVING A RADIUS OF 20.00 FEET, THROUGH A CENTRAL ANGLE OF 52°30'11" AND BEING SUBTENDED BY A CHORD THAT BEARS SOUTH 63°44'48" EAST, 17.69 FEET; THENCE SOUTH 00°00'00" WEST, A DISTANCE OF 130.00 FEET; THENCE SOUTH 90°00'00" EAST, A DISTANCE OF 113.79 FEET; THENCE SOUTH 00°00'00" WEST, A DISTANCE OF 150.36 FEET TO A POINT OF CURVATURE; THENCE SOUTHERLY, 165.62 FEET ALONG THE ARC OF A CIRCULAR CURVE, CONCAVE WESTERLY, HAVING A RADIUS OF 320.00 FEET, THROUGH A CENTRAL ANGLE OF 29°39'13" AND BEING SUBTENDED BY A CHORD THAT BEARS SOUTH 14°49'36" WEST, 163.77 FEET TO A POINT OF COMPOUND CURVATURE; THENCE SOUTHWESTERLY, 386.52 FEET ALONG THE ARC OF A CIRCULAR CURVE, CONCAVE NORTHWESTERLY, HAVING A RADIUS OF 1,190.00 FEET, THROUGH A CENTRAL ANGLE OF 18°36'36" AND BEING SUBTENDED BY A CHORD THAT BEARS SOUTH 38°57'31" WEST, 384.82 FEET TO A POINT ON A NON-TANGENTIAL CURVE; THENCE SOUTHEASTERLY, 46.86 FEET ALONG THE ARC OF A CIRCULAR CURVE, CONCAVE SOUTHWESTERLY, HAVING A RADIUS OF 45.00 FEET, THROUGH A CENTRAL ANGLE OF 59°39'38" AND BEING SUBTENDED BY A CHORD THAT BEARS SOUTH 44°45'36" EAST, 44.77 FEET TO A POINT OF REVERSE CURVATURE; THENCE SOUTHEASTERLY, 20.36 FEET ALONG THE ARC OF A CIRCULAR CURVE, CONCAVE NORTHEASTERLY, HAVING A RADIUS OF 62.58 FEET, THROUGH A CENTRAL ANGLE OF 18°38'25" AND BEING SUBTENDED BY A CHORD THAT BEARS SOUTH 24°15'00" EAST, 20.27 FEET TO A POINT OF REVERSE CURVATURE; THENCE SOUTHERLY, 48.52 FEET ALONG THE ARC OF A CIRCULAR CURVE, CONCAVE WESTERLY, HAVING A RADIUS OF 45.00 FEET, THROUGH A CENTRAL ANGLE OF 61°46'37" AND BEING SUBTENDED BY A CHORD THAT BEARS SOUTH 02°40'53" EAST, 46.20 FEET; THENCE SOUTH 28°12'25" WEST, A DISTANCE OF 70.46 FEET TO A POINT OF CURVATURE; THENCE SOUTHERLY, 139.04 FEET ALONG THE ARC OF A CIRCULAR CURVE, CONCAVE EASTERLY, HAVING A RADIUS OF 300.00 FEET, THROUGH A CENTRAL ANGLE OF 26°33'16" AND BEING SUBTENDED BY A CHORD THAT BEARS SOUTH 14°55'47" WEST, 137.80 FEET TO A POINT OF REVERSE CURVATURE; THENCE SOUTHWESTERLY, 389.19 FEET ALONG THE ARC OF A CIRCULAR CURVE, CONCAVE NORTHWESTERLY, HAVING A RADIUS OF 300.00 FEET, THROUGH A CENTRAL ANGLE OF 74°19'47" AND BEING SUBTENDED BY A CHORD THAT BEARS SOUTH 38°49'03" WEST, 362.47 FEET TO A POINT OF REVERSE CURVATURE; THENCE SOUTHWESTERLY, 450.20 FEET ALONG THE ARC OF A CIRCULAR CURVE, CONCAVE SOUTHEASTERLY, HAVING A RADIUS OF 300.00 FEET, THROUGH A CENTRAL ANGLE OF 85°58'55" AND BEING SUBTENDED BY A CHORD THAT BEARS SOUTH 32°59'29" WEST, 409.13 FEET TO A POINT OF REVERSE CURVATURE; THENCE SOUTHWESTERLY, 87.83 FEET ALONG THE ARC OF A CIRCULAR CURVE, CONCAVE NORTHWESTERLY, HAVING A RADIUS OF 45.00 FEET, THROUGH A CENTRAL ANGLE OF 111°49'56" AND BEING SUBTENDED BY A CHORD THAT BEARS SOUTH 45°55'00" WEST, 74.54 FEET; THENCE NORTH 78°10'02" WEST, A DISTANCE OF 194.68 FEET TO A POINT OF CURVATURE; THENCE NORTHERLY, 91.65 FEET ALONG THE ARC OF A CIRCULAR CURVE, CONCAVE EASTERLY, HAVING A RADIUS OF 45.00 FEET, THROUGH A CENTRAL ANGLE OF 116°41'28" AND BEING SUBTENDED BY A CHORD THAT BEARS NORTH 19°49'18" WEST, 76.61 FEET; THENCE NORTH 38°31'26" EAST, A DISTANCE OF 111.08 FEET; THENCE NORTH 51°28'34" WEST, A DISTANCE OF 105.27 FEET TO A POINT ON A NON-



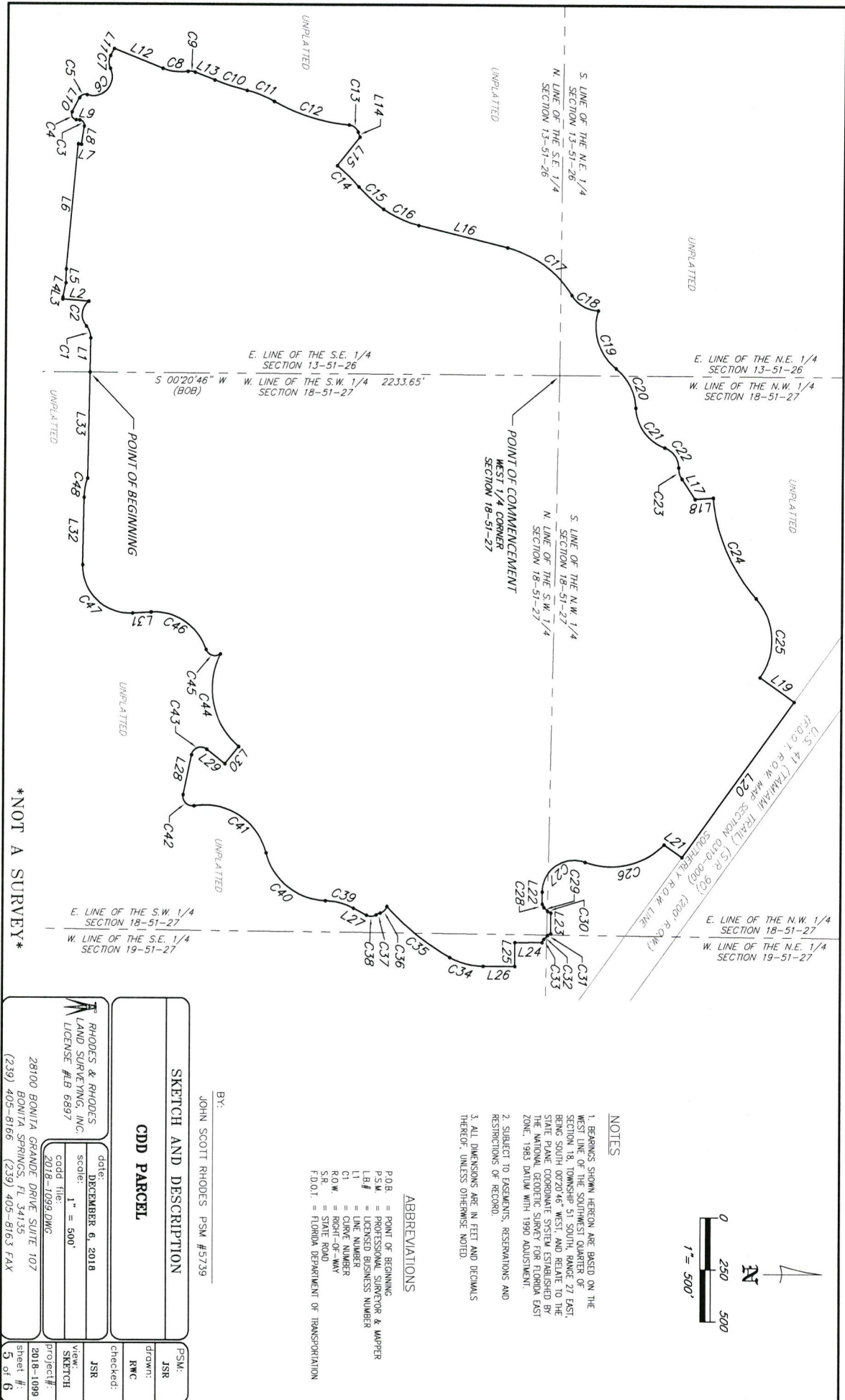
RHODES & RHODES LAND SURVEYING, INC.

28100 BONITA GRANDE DRIVE SUITE 107
BONITA SPRINGS, FLORIDA 34135
PHONE (239) 405-8166 FAX (239) 405-8163

TANGENTIAL CURVE; THENCE WESTERLY, 483.85 FEET ALONG THE ARC OF A CIRCULAR CURVE, CONCAVE NORTHERLY, HAVING A RADIUS OF 365.00 FEET, THROUGH A CENTRAL ANGLE OF $75^{\circ}57'07''$ AND BEING SUBTENDED BY A CHORD THAT BEARS SOUTH $78^{\circ}42'43''$ WEST, 449.19 FEET TO A POINT ON A NON-TANGENTIAL CURVE; THENCE SOUTHERLY, 84.57 FEET ALONG THE ARC OF A CIRCULAR CURVE, CONCAVE WESTERLY, HAVING A RADIUS OF 45.00 FEET, THROUGH A CENTRAL ANGLE OF $107^{\circ}40'34''$ AND BEING SUBTENDED BY A CHORD THAT BEARS SOUTH $16^{\circ}59'07''$ WEST, 72.66 FEET TO A POINT ON A NON-TANGENTIAL CURVE; THENCE SOUTHWESTERLY, 339.06 FEET ALONG THE ARC OF A CIRCULAR CURVE, CONCAVE SOUTHEASTERLY, HAVING A RADIUS OF 260.00 FEET, THROUGH A CENTRAL ANGLE OF $74^{\circ}43'05''$ AND BEING SUBTENDED BY A CHORD THAT BEARS SOUTH $33^{\circ}47'18''$ WEST, 315.54 FEET; THENCE SOUTH $03^{\circ}34'14''$ EAST, A DISTANCE OF 87.88 FEET TO A POINT OF CURVATURE; THENCE SOUTHWESTERLY, 371.61 FEET ALONG THE ARC OF A CIRCULAR CURVE, CONCAVE NORTHWESTERLY, HAVING A RADIUS OF 225.00 FEET, THROUGH A CENTRAL ANGLE OF $94^{\circ}37'47''$ AND BEING SUBTENDED BY A CHORD THAT BEARS SOUTH $43^{\circ}44'40''$ WEST, 330.79 FEET; THENCE NORTH $88^{\circ}56'27''$ WEST, A DISTANCE OF 322.37 FEET TO A POINT OF CURVATURE; THENCE WESTERLY, 92.45 FEET ALONG THE ARC OF A CIRCULAR CURVE, CONCAVE NORTHERLY, HAVING A RADIUS OF 285.00 FEET, THROUGH A CENTRAL ANGLE OF $18^{\circ}35'10''$ AND BEING SUBTENDED BY A CHORD THAT BEARS NORTH $79^{\circ}38'52''$ WEST, 92.05 FEET; THENCE NORTH $88^{\circ}56'16''$ WEST, A DISTANCE OF 502.88 FEET TO THE POINT OF BEGINNING.

CONTAINING 9,147,731 SQUARE FEET OR 210.003 ACRES, MORE OR LESS.





LINE TABLE		
LINE	LENGTH	BEARING
L1	161.44'	N 88°56'16" W
L2	125.63'	S 04°41'30" W
L3	9.99'	N 84°46'05" W
L4	68.76'	N 77°45'48" W
L5	65.94'	N 88°51'30" W
L6	595.29'	N 84°45'16" W
L7	15.19'	N 08°46'55" E
L8	86.83'	N 61°13'05" W
L9	16.93'	S 05°42'49" W
L10	75.11'	N 61°59'14" W
L11	36.90'	N 61°59'14" W
L12	250.74'	N 21°31'59" E
L13	100.89'	N 21°31'59" E
L14	25.61'	N 68°59'19" E
L15	171.93'	S 51°48'02" E
L16	434.86'	N 13°57'25" E
L17	115.02'	N 57°09'30" E
L18	86.36'	N 04°35'06" W
L19	200.00'	N 35°38'54" E
L20	910.68'	S 54°21'08" E
L21	103.80'	S 35°39'40" W
L22	58.44'	S 90°00'00" E
L23	100.00'	S 90°00'00" E
L24	130.00'	S 90°00'00" W
L25	113.79'	S 90°00'00" E
L26	150.36'	S 00°00'00" W
L27	70.46'	S 28°12'25" W
L28	194.68'	N 78°10'02" W
L29	111.08'	N 38°31'26" E
L30	105.27'	N 51°28'34" W
L31	87.88'	S 03°54'14" E
L32	322.37'	N 88°56'27" W
L33	502.88'	N 88°56'16" W

CURVE TABLE			
CURVE	RADIUS	DELTA	LENGTH
C1	80.00'	42°52'13"	59.86'
C2	81.20'	94°11'25"	133.49'
C3	25.00'	93°04'05"	40.61'
C4	25.00'	112°17'57"	49.00'
C5	30.00'	81°02'25"	42.43'
C6	90.00'	135°41'08"	213.13'
C7	65.00'	34°38'43"	61.99'
C8	230.00'	121.17'	119.77'
C9	65.00'	30°11'06"	34.24'
C10	1190.00'	7°48'48"	162.28'
C11	510.00'	15°36'23"	138.92'
C12	890.00'	24°15'51"	376.91'
C13	50.00'	65°11'08"	56.89'
C14	895.00'	9°10'51"	143.41'
C15	668.60'	133°15'31"	157.90'
C16	500.00'	21°18'01"	185.88'
C17	495.00'	45°07'42"	369.88'
C18	150.00'	57°54'01"	151.58'
C19	255.00'	68°17'37"	303.95'
C20	250.00'	49°13'09"	214.76'
C21	210.00'	67°43'34"	248.23'
C22	100.00'	69°57'55"	122.11'
C23	100.00'	32°50'27"	57.32'
C24	830.00'	36°29'32"	528.63'
C25	300.00'	27°06'37"	403.75'
C26	350.00'	66°22'03"	405.42'
C27	150.00'	110°27'50"	289.19'
C28	20.00'	52°30'17"	18.33'
C29	95.00'	15°00'34"	24.89'
C30	20.00'	52°30'17"	18.33'
C31	20.00'	52°30'17"	18.33'
C32	95.00'	15°00'34"	24.89'
C33	20.00'	52°30'17"	18.33'
C34	320.00'	29°29'13"	165.62'
C35	1180.00'	18°36'36"	386.52'
C36	45.00'	59°39'38"	46.86'
C37	62.58'	18°38'25"	20.36'
C38	45.00'	61°46'37"	48.52'
C39	300.00'	26°33'16"	139.04'
C40	300.00'	74°19'47"	389.19'
C41	300.00'	85°58'55"	450.20'
C42	45.00'	111°49'56"	87.83'
C43	45.00'	116°41'28"	91.65'
C44	365.00'	25°37'02"	483.85'
C45	45.00'	107°40'34"	84.52'
C46	260.00'	74°43'05"	339.06'
C47	225.00'	94°37'47"	371.61'
C48	285.00'	18°35'10"	92.45'

NOT A SURVEY

SKETCH AND DESCRIPTION

CDD PARCEL

RHOODES & RHOODES LAND SURVEYING, INC. LICENSE #LB 6897		date: DECEMBER 6, 2018 scale: 1" = 500'
28100 BONITA GRANDE DRIVE SUITE 107 BONITA SPRINGS, FL 34135 (239) 405-8166 (239) 405-8163 FAX		cadd title: 2018-1099.DWG project #: 2018-1099 sheet #: 6 of 6

checked: JSR

drawn: RMC

PSW: JSR



FLORIDA DEPARTMENT *of* STATE

RON DESANTIS
Governor

LAUREL M. LEE
Secretary of State

October 14, 2019

Ms. Martha Vergara, BMR & VAB Senior Deputy Clerk
Office of the Clerk of the Circuit Court
& Comptroller of Collier County
3299 Tamiami Trail, Suite #401
Naples, Florida 34112-5324

Dear Ms. Vergara:

Pursuant to the provisions of Section 125.66, Florida Statutes, this will acknowledge receipt of your electronic copy of Collier County Ordinance No. 2019-32, which was filed in this office on October 10, 2019.

Sincerely,

Ernest L. Reddick
Program Administrator

ELR/lb